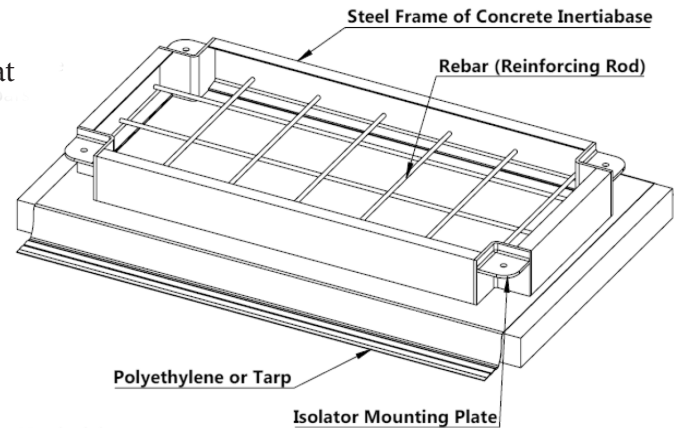
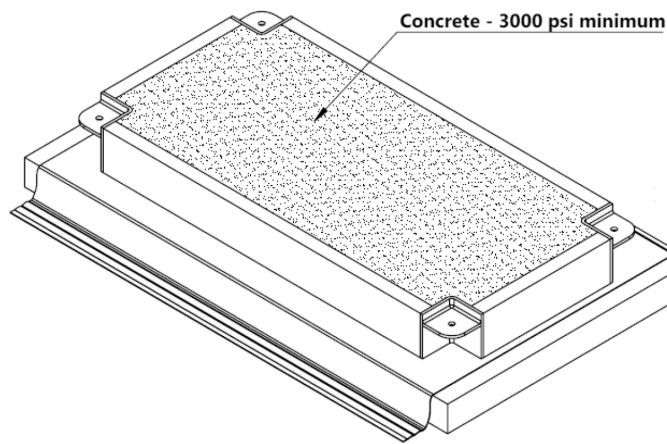


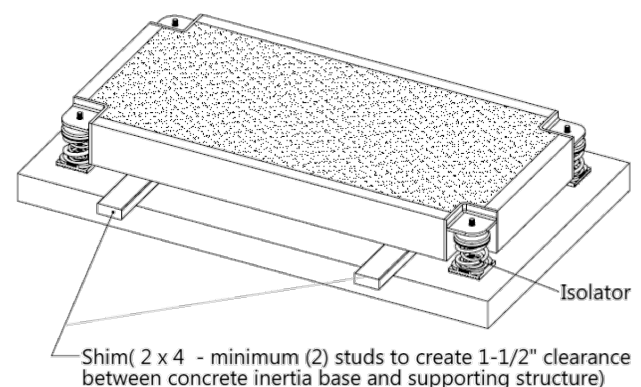
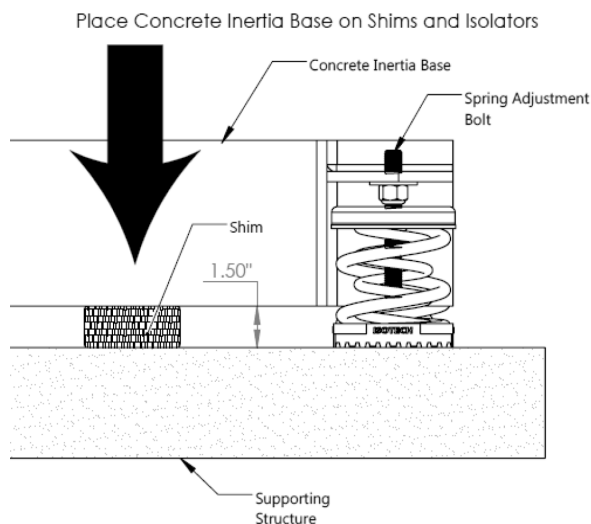
1. Cover the area with Polyethylene or Tarp and place Structural steel frame on top. Make sure rebars are located at the bottom.




2. Fill steel frame with concrete (minimum 3000 psi) and create a smooth and flat concrete surface.

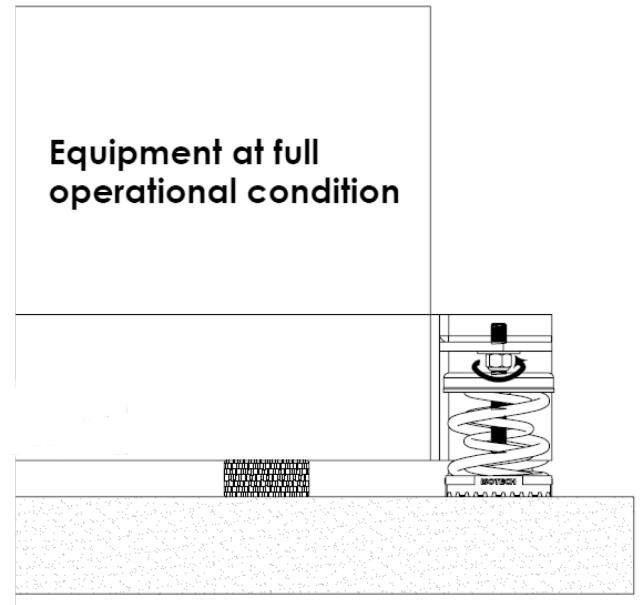
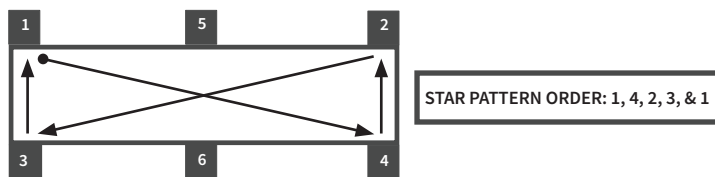
-Wait for concrete to be completely cured.

3. Lift the base, remove the tarp, located isolators per tags and submittal package, place minimum (2) Two 1-1/2" thick Shims (2x 4 studs) and lower Concrete Inertia Base on the shims and isolators. Isolators should be centered with mounting holes of corner brackets; shims must be located close to Isolator corner brackets.

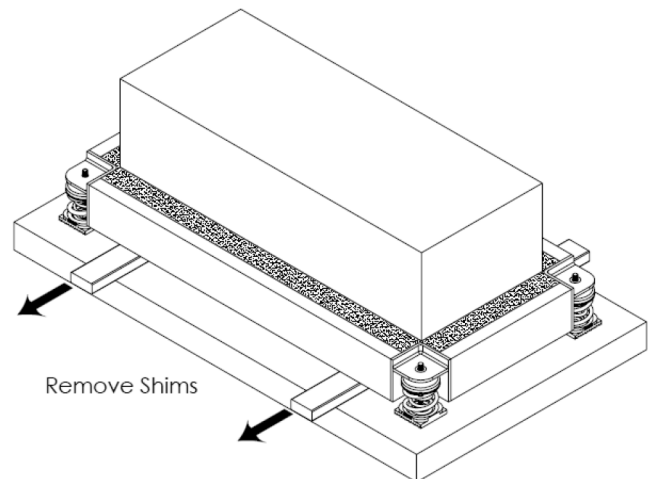
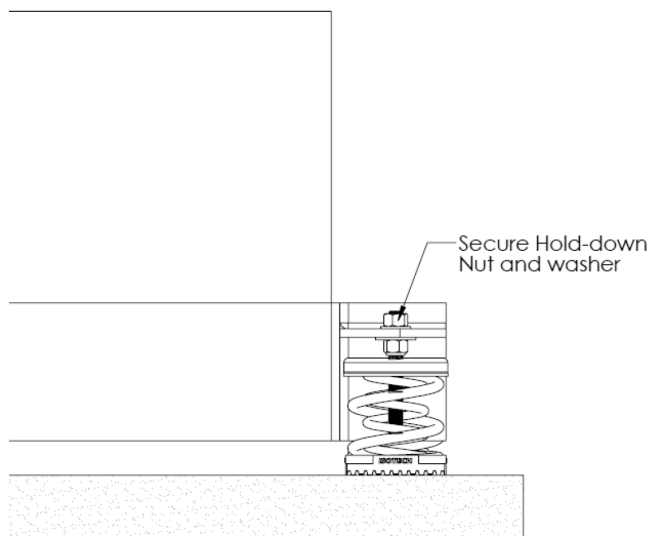



PROJECT INFORMATION		EQUIPMENT INFORMATION		Canada location	USA Location	
Customer:		Type:		35 Siltan Road Woodbridge ON L4L 7Z8 CANADA T: 905-856-5001	3021 E Coronado St. Anaheim, CA.,92806 U.S.A T: 949-788-2930	
Project:		Qty Required:				
Drawing No:		Operating Weight:				
Notes:						

4. Secure Equipment on Concrete Inertia Base and prepare it for full operational condition. If equipment is pump, connect intake and discharge and fill pipes with water. Once the equipment is at full operating condition, follow star pattern and adjust isolators by turning spring adjustment bolt counter clockwise. Each isolator spring adjustment bolt must be turned maximum 2 or 3 turns at a time.



5. Isolators adjustment must be continued until equipment is floating on springs and is free from the shims. Remove the shims and secure hold-down nuts and washer for each isolator.



PROJECT INFORMATION		EQUIPMENT INFORMATION		Canada location	USA Location	
Customer:		Type:		35 Silton Road Woodbridge ON L4L 7Z8 CANADA T: 905-856-5001	3021 E Coronado St. Anaheim, CA.,92806 U.S.A T: 949-788-2930	
Project:		Qty Required:				
Drawing No:		Operating Weight:				
Notes:						