

## SPECIFICATIONS : IPGR ISOTECH RISER GUIDE DIMENSIONS FOR MAX. 1.5 INSULATION

NOM. PIPE SIZE	THERMAL MOVEMENT	L		L1		W		W1		OH		H		A	
D (in)		in	mm	in	mm	in	mm	in	mm	in	mm	in	mm	in	mm
2½	MAX. 4" AXIAL MOVEMENT	8 ¾	222	7 ½	191	3	76	5 ¾	137	4 ¼	108	7 ½	191	7/16	11
3		10	254	8 ¾	217	3	76	6	152	4 ¾	121	8 ½	216	7/16	11
4		10 ¾	273	9 ¼	235	3	76	6 ½	165	5 ¾	132	9 ¾	238	9/16	14
6		13 ¼	337	11 ¼	286	4	102	7 ½	181	6 ¾	159	11 ¾	294	1 1/16	17
8		15 ½	384	13 ¼	337	4	102	8 ½	206	7	178	13 ¾	340	1 1/16	17
10		20 ¾	517	18 ¾	467	6	152	--	--	10 ¾	259	16 ¾	421	1 1/16	17

Note: 10" Pipe guide only available for floor mount installation

## PIPE GUIDE SPACING

D (in)	MAX. DISTANCE FROM EXPANSION JOINT TO 1ST PIPE GUIDE OR PIPE ANCHOR	DISTANCE BETWEEN 1ST & 2ND PIPE GUIDE	"S" DISTANCE BETWEEN ADDITIONAL PIPE GUIDES ACCORDING TO IN-LINE PRESSURE						
	4 x D	14 x D	50 psi	100 psi	150 psi	200 psi	250 psi	300 psi	350 psi
2½	10 in	24 in	32 ft	23 ft	17 ft	16 ft	14 ft	13 ft	12 ft
3	12 in	42 in	38 ft	27 ft	22 ft	19 ft	17 ft	16 ft	15 ft
4	16 in	56 in	52 ft	37 ft	31 ft	27 ft	24 ft	22 ft	20 ft
6	24 in	84 in	67 ft	47 ft	39 ft	34 ft	32 ft	28 ft	26 ft
8	30 in	112 in	86 ft	62 ft	51 ft	44 ft	40 ft	36 ft	34 ft
10	40 in	140 in	100 ft	75 ft	60 ft	52 ft	50 ft	45 ft	40 ft

C		
D	in	mm
2½	5/16	8
3	5/16	8
4	5/16	8
6	13/16	21
8	13/16	21

CONTACT FACTORY FOR OTHER PIPE SIZES

WALL MOUNT HOLE DIMENSIONS	in	mm
a	5/8	16
b	1 3/16	21
e	1 15/16	49

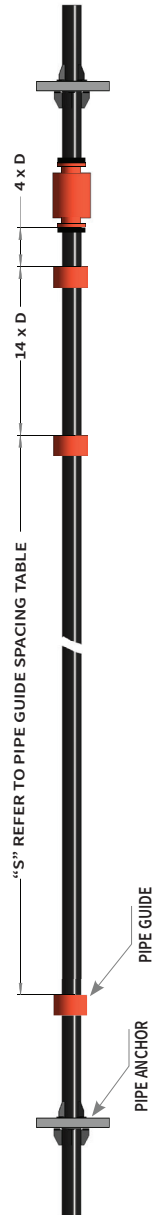
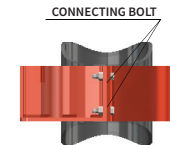
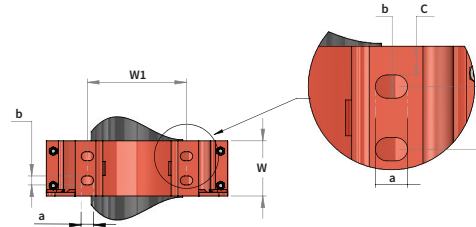
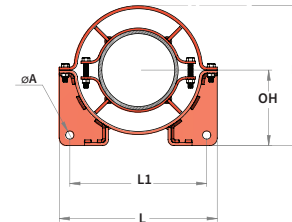
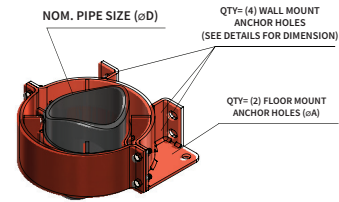
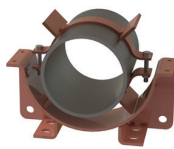


Fig.1

Fig.2

Fig.3



### Pipe Guide Specifications:

- ISOTECH Pipe Guides' finish is specialty epoxy electrostatic paint to prevent galvanic corrosion when installed on Stainless Steel and Copper pipes
- ISOTECH Pipe Guides are designed for both floor mount and wall mount installations. Use 3/8" anchors for size 2½ and 3 in, ½" anchors for size 4 and ¾" anchor for size 6 and 8 in for securing pipe guides to building structure.
- ISOTECH Pipe Guides are designed to support 15% of pipe anchor load; the above table must be used for pipe guide distance from Expansion joint.

### Installation Instructions:

- Step 1: Follow Fig.1 and install the two spider half clamps on pipe using long 3/8" bolts provided
- Step 2: Follow Fig.2 center the outer shells around pipe spider clamp, leave 1/8" gap between spider clamp tabs and outer shell
- Step 3: Follow Fig.3 and connect outer shell halves together using short 3/8" bolts provided. Use (2) bolts for size 2½, 3 & 4 and (4) bolts for size 6 & 8 as provided in pipe guide box
- Step 4: Center outer shell with pipe and ensure 1/8" gap between spider clamp tabs and outer shell, then anchor pipe guide to building structure
- Step 5: Install pipe guides per distances specified on the above table according to pipe size and in-line pressure.

PROJECT INFORMATION		EQUIPMENT INFORMATION		Canada location	USA Location
Customer:		Type:		35 Siltan Road Woodbridge ON L4L 7Z8 CANADA T: 905-856-5001	3021 E Coronado St. Anaheim, CA., 92806 U.S.A T: 949-788-2930
Project:		Qty Required:			
Drawing No:		Operating Weight:			
Notes:				Tool free : 1-888-831-3311 <a href="http://www.isotechindustries.com">www.isotechindustries.com</a>	