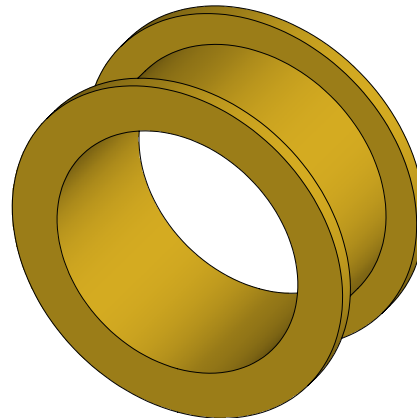
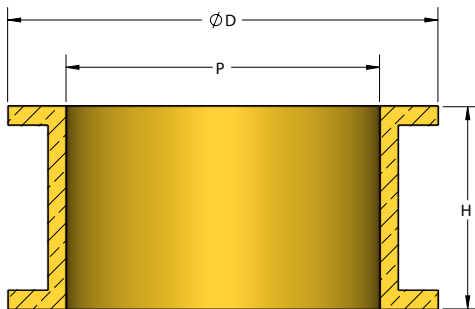


## SPECIFICATIONS : IBBC- ISOTECH HEAVY DUTY MACHINED BRASS RING 1" - 4"

Model	Pipe Size	H		øD		Approx. WT.	
	P (in)	in	mm	in	mm	lbs	kg
IBBC-100	1	2	50.8	1.75	44.45	0.34	0.15
IBBC-125	1.25	2	50.8	2.1	53.34	0.56	0.25
IBBC-150	1.5	2	50.8	2.4	61.00	0.62	0.28
IBBC-200	2	2	50.8	3.0	76.20	0.83	0.38
IBBC-250	2.5	2	50.8	3.5	88.90	0.95	0.43
IBBC-300	3	2	50.8	4.3	109.22	1.75	0.79
IBBC-400	4	2	50.8	5.3	134.62	2.25	1.02



### Note:

- ISOTECH machined Brass Rings are made of specialty Brass Alloy to get maximum bonding strength when soldered to Copper pipe
- Use Lead-free solder to secure ISOTECH Machined Brass Ring to copper pipe as shown
- IBBC are designed for ISOTECH Riser Clamps
- Follow soldering instructions for proper installation of brass ring on copper pipe
- Solder ISOTECH machined brass ring on copper pipe before adding ISOTECH Riser Clamp
- Ensure Riser Clamp is rested against brass ring lip on load direction

PROJECT INFORMATION		EQUIPMENT INFORMATION		Canada location	USA Location
Customer:		Type:		35 Silton Road Woodbridge ON L4L 7Z8 CANADA T: 905-856-5001	3021 E Coronado St. Anaheim, CA.,92806 U.S.A T: 949-788-2930
Project:		Qty Required:			
Drawing No:		Operating Weight:			
Notes:				Tool free : 1-888-831-3311 <a href="http://www.isotechindustries.com">www.isotechindustries.com</a>	

