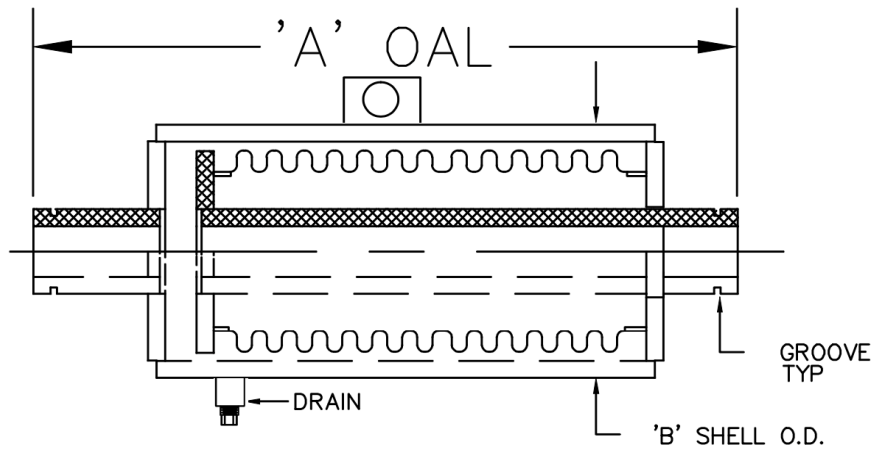


**SPECIFICATIONS : ISOTECH EXTERNALLY PRESSURIZED EXPANSION JOINT
STAINLESS STEEL PIPE WITH GROOVE END**

Model	Pressure Rating (PSI)	DIA (In)	PRESSURE THRUST @ DESIGN PRES. (lbf.)	'A' OAL (In)	'B' SHELL O.D. (In)	SPRING RATE (lb/in)	ID # OR TAG #	QTY
IEJP-SS300-GR4-1	300	1	2400	23 1/2	4 1/2	60		
IEJP-SS300-GR4-1.25	300	1 1/4	2400	24	4 1/2	60		
IEJP-SS300-GR4-1.5	300	1 1/2	2400	23	4 1/2	60		
IEJP-SS300-GR4-2	300	2	2400	24 1/2	4 1/2	60		
IEJP-SS300-GR4-2.5	300	2 1/2	6100	27 3/8	6 3/8	230		
IEJP-SS300-GR4-3	300	3	6100	27 3/8	6 3/8	230		
IEJP-SS300-GR4-3	300	3 1/2	6100	27 3/8	6 3/8	230		
IEJP-SS300-GR4-4	300	4	9000	26 3/4	8 3/8	230		
IEJP-SS300-GR4-5	300	5	20500	27 7/8	10 3/4	500		
IEJP-SS300-GR4-6	300	6	20500	27 7/8	10 3/4	500		
IEJP-SS300-GR4-8	300	8	24500	26 1/4	12 3/4	600		
IEJP-SS300-GR4-10	300	10	36700	26 1/4	16	850		
IEJP-SS300-GR4-12	300	12	50500	26 1/4	18	1250		

MATERIALS OF CONSTRUCTION

BELLOWS :	300 SERIES STAINLESS STEEL
PIPE :	STAINLESS STEEL SCH. STD.
PLATES:	STAINLESS STEEL



RATED MAXIMUM COMPRESSION = 4"
DESIGN PRESSURE = 300 PSIG @ 650°F

NOTE: UNITS ARE DESIGNED TO ACCOMMODATE 1/2" OVER COMPRESSION & 1/2" OVER EXTENSION

IMPORTANT NOTE:

1-EXPANSION COMPENSATOR'S ARE DESIGNED FOR A TOTAL OF 4" MOVEMENT; ACCOMMODATING 3 1/2" PIPE THERMAL EXPANSION AND 1/2" PIPE THERMAL CONTRACTION.

PROJECT INFORMATION		EQUIPMENT INFORMATION		Canada location	USA Location
Customer:		Type:		35 Silton Road Woodbridge ON L4L 7Z8 CANADA T: 905-856-5001	3021 E Coronado St. Anaheim, CA.,92806 U.S.A T: 949-788-2930
Project:		Qty Required:			
Drawing No:		Operating Weight:			
Notes:				Tool free : 1-888-831-3311 www.isotechindustries.com	