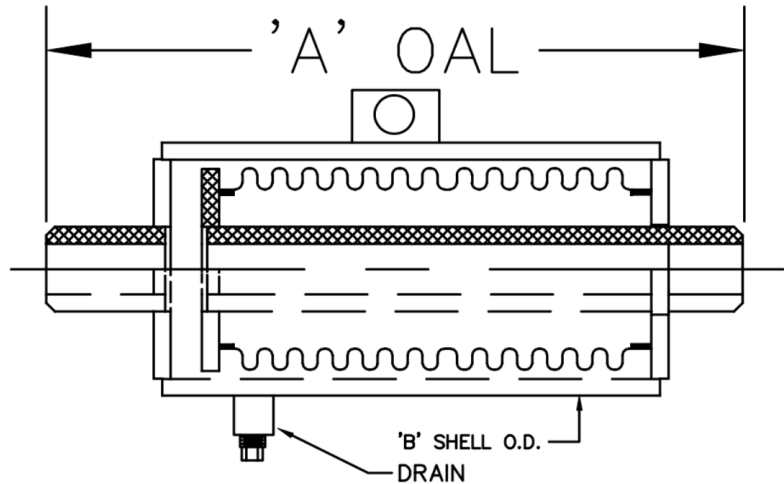


**SPECIFICATIONS : ISOTECH EXTERNALLY PRESSURIZED EXPANSION JOINT CARBON STEEL PIPE WITH WELD END**

Model	Pressure Rating (PSI)	DIA (In)	PRESSURE THRUST @ DESIGN PRES. ( lbf. )	'A' OAL (In)	'B' SHELL O.D. (In)	SPRING RATE (lb/in)	ID # OR TAG #	QTY
IEJP-CS300-W4-1	300	1	2400	23 ½	4 ½	60		
IEJP-CS300-W4-1.25	300	1 ¼	2400	24	4 ½	60		
IEJP-CS300-W4-1.5	300	1 ½	2400	23	4 ½	60		
IEJP-CS300-W4-2	300	2	2400	24 ½	4 ½	60		
IEJP-CS300-W4-2.5	300	2 ½	6100	27 ¾	6 ¾	230		
IEJP-CS300-W4-3	300	3	6100	27 ¾	6 ¾	230		
IEJP-CS300-W4-3	300	3 ½	6100	27 ¾	6 ¾	230		
IEJP-CS300-W4-4	300	4	9000	26 ¾	8 ¾	230		
IEJP-CS300-W4-5	300	5	20500	27 ¾	10 ¾	500		
IEJP-CS300-W4-6	300	6	20500	27 ¾	10 ¾	500		
IEJP-CS300-W4-8	300	8	24500	26 ¼	12 ¾	600		
IEJP-CS300-W4-10	300	10	36700	26 ¼	16	850		
IEJP-CS300-W4-12	300	12	50500	26 ¼	18	1250		

**MATERIALS OF CONSTRUCTION**

BELLOWS :	T-321 STAINLESS STEEL
PIPE :	CARBON STEEL SCH. STD.
PLATES:	CARBON STEEL



RATED MAXIMUM COMPRESSION = 4"  
DESIGN PRESSURE = 300 PSIG @ 650°F

**NOTE:** UNITS ARE DESIGNED TO ACCOMMODATE ½" OVER COMPRESSION & ½" OVER EXTENSION

**IMPORTANT NOTE:**

1-EXPANSION COMPENSATOR'S ARE DESIGNED FOR A TOTAL OF 4" MOVEMENT; ACCOMMODATING 3 ½" PIPE THERMAL EXPANSION AND ½" PIPE THERMAL CONTRACTION.

PROJECT INFORMATION		EQUIPMENT INFORMATION		Canada location	USA Location
Customer:		Type:		35 Silton Road Woodbridge ON L4L 7Z8 CANADA T: 905-856-5001	3021 E Coronado St. Anaheim, CA.,92806 U.S.A T: 949-788-2930
Project:		Qty Required:			
Drawing No:		Operating Weight:			
Notes:				Tool free : 1-888-831-3311 <a href="http://www.isotechindustries.com">www.isotechindustries.com</a>	

