

IOSA-1 ISOTECH OPEN SPRING ISOLATOR

File No.: ISOCS-IOSA-1-30-600

Date: 09/15/15

ISOIN-IOSA-1-30-600, Installation Instructions Document,
to be Reviewed for Installation

SPECIFICATIONS : IOSA-1" DEFLECTION ISOTECH OPEN SPRINGS ISOLATOR

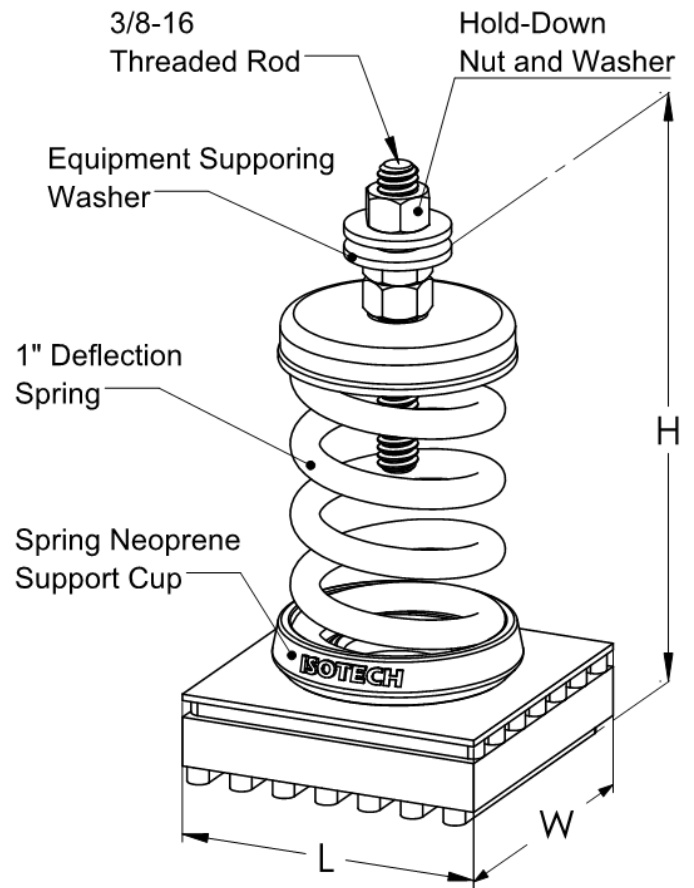
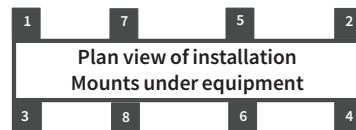
Model	RATED LOAD		RATED DEFLECTION		SPRING COLOR	APPROX. WEIGHT	
	lbf.	kN	in	mm		lbs.	kg
IOSA-1-30	30	0.134	1.0	2.54	YELLOW	0.8	0.35
IOSA-1-50	50	0.223	1.0	2.54	GREEN	0.8	0.37
IOSA-1-100	100	0.445	1.0	2.54	BLACK	0.9	0.39
IOSA-1-150	150	0.668	1.0	2.54	RED	0.9	0.41
IOSA-1-200	200	0.89	1.0	2.54	BLUE	1.0	0.44
IOSA-1-300	300	1.335	1.0	2.54	WHITE	1.0	0.44
IOSA-1-400	400	1.78	1.0	2.54	BROWN	1.0	0.47
IOSA-1-500	500	2.225	1.0	2.54	ORANGE	1.1	0.48
IOSA-1-600	600	2.669	1.0	2.54	GREY	1.1	0.5

Dimension : IOSA-1" DEFLECTION ISOTECH OPEN SPRING ISOLATOR

Model	H		L & W	
	in	mm	in	mm
IOSA-1-30-600	5	0129	3	77


ISOLATOR'S LOCATIONS

1:	5:
2:	6:
3:	7:
4:	8:



Important Notes:

1. Springs are powder – coated for maximum corrosion protection, and are designed to have 50% over travel under rated load - KX/KY ratio of 0.8
2. Minimum Grade 2 for hardware
3. Safety factor 3:1 (burst to operating pressure)
4. Hardware, spring compression cup and spring support cup are all zinc plated
5. All elements are safe at solid loading

PROJECT INFORMATION		EQUIPMENT INFORMATION		Canada location	USA Location	
Customer:		Type:		35 Siltan Road Woodbridge ON L4L 7Z8 CANADA T: 905-856-5001	3021 E Coronado St. Anaheim, CA.,92806 U.S.A T: 949-788-2930	
Project:		Qty Required:				
Drawing No:		Operating Weight:				
Notes:						

COPYRIGHT: UNLESS OTHERWISE AGREED OR STATED IN WRITING, ALL INFORMATION AND DESIGNS DISPLAYED WITHIN ARE ALL THE PROPERTY OF ISOTECH INDUSTRIES INC. AND MAY NOT BE DUPLICATED OR DISTRIBUTED OUTSIDE OF ISOTECH INDUSTRIES INC. WITH THE EXCEPTION OF AUTHORIZED PERSONS WITH LEGITIMATE NEED TO KNOW WHO BY THE USE OF THIS RECOGNIZE ISOTECH INDUSTRIES INC. OWNERSHIP AND WILL COMPLY TO MAINTAIN THIS INFORMATION AND DESIGN IN STRICT CONFIDENCE.