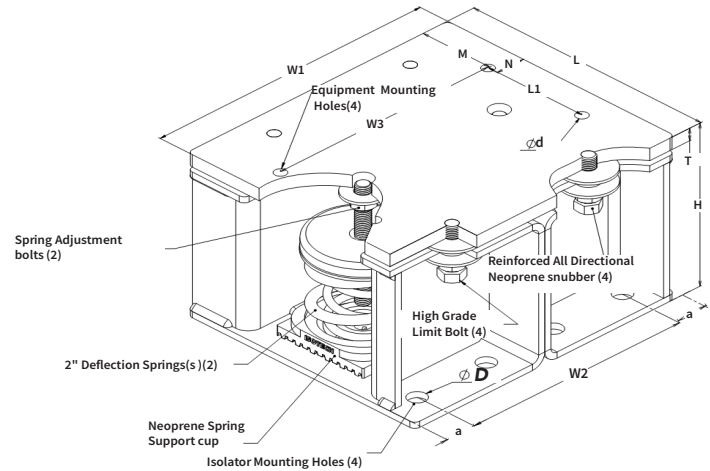


## SPECIFICATIONS : ICSS-2" DEFLECTION RESTRAINED SPRING AND NEOPRENE CUP FOR ATTACHMENT TO CONCRETE STRUCTURE

Model	Rated Load		Rated Deflection		Spring Color		Approx. WT.	
	lbF.	kN	in	mm	outer	inner	lbs.	kg
ICSSC-2-5000	5000	22.241	2.0	50.8	ORANGE	---	99.00	44.91
ICSSC-2-5600	5600	24.91	2.0	50.8	ORANGE	YELLOW	100.60	45.64
ICSSC-2-6000	6000	26.69	2.0	50.8	BLACK	---	100.00	45.36
ICSSC-2-6600	6600	29.359	2.0	50.8	BLACK	YELLOW	101	45.81
ICSSC-2-7000	7000	31.138	2.0	50.8	BLACK	WHITE	101.40	46
ICSSC-2-7600	7600	33.807	2.0	50.8	BLACK	RED	101.80	46.18
ICSSC-2-8000	8000	35.586	2.0	50.8	BLACK	BLUE	102.24	46.38
ICSSC-2-9000	9000	40.034	2.0	50.8	BLACK	BROWN	103.40	46.91



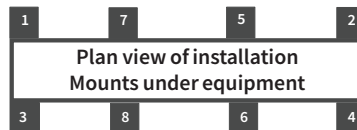
### Model

#### DIMENSION : ICSSC-2-5000 - 9000

L		L1		H		w1		W2		W3	
in	mm	in	mm	in	mm	in	mm	in	mm	in	mm
11	280	3 1/16	99	6	153	11 1/4	286	8 3/4	222	9 3/4	248
T		M		N		a		ød		ø D	
in	mm	in	mm	in	mm	in	mm	in	mm	in	mm
5/8	16	3 1/16	99	3/4	19	1 1/4	32	5/16	18	3/4	19
spring Adjustment Bolt											
5/8"											

### ISOLATOR'S LOCATIONS

1:	5:
2:	6:
3:	7:
4:	8:



### Notes:

- ICSSC-2-5000-9000 type isolators are designed for minimum 1g lateral seismic and wind load when attached to steel structure. Housing is made from high strength steel
- ICSSC-2-5000-9000 Isolators are all Pre-Compressed to allow the lowest overall installation height and to offer significant labor saving during installation
- All springs have additional travel to solid equal to 50% of the Rated Deflection with minimum Kx/Ky ratio of 1.0 - All Elements are safe at solid load
- Spring(s) are powder - coated to provide maximum corrosion resistance , and are color-coded for easy identification at site - see table above
- Hot-Dip Galvanized finish for Housing to offer maximum corrosion resistance for isolator - Hardware and Spring Compression Cup are zinc -electroplated
- ICSSC-2-5000-9000 isolators are designed to allow replacement of Neoprene grommet without disturbing equipment. Neoprene grommet are installed to prevent metal to metal contact

PROJECT INFORMATION		EQUIPMENT INFORMATION		Canada location	USA Location
Customer:		Type:		35 Silton Road Woodbridge ON L4L 7Z8 CANADA T: 905-856-5001	3021 E Coronado St. Anaheim, CA.,92806 U.S.A T: 949-788-2930
Project:		Qty Required:			
Drawing No:		Operating Weight:			
Notes:				Tool free : 1-888-831-3311 <a href="http://www.isotechindustries.com">www.isotechindustries.com</a>	

