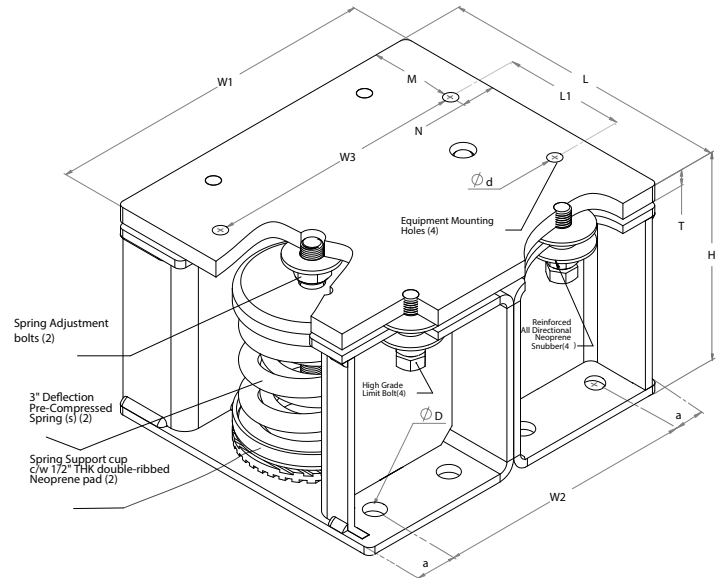


## SPECIFICATIONS : ICSS-3" DEFLECTION RESTRAINED SPRING ISOLATOR

Model	Rated Load		Rated Deflection		Spring Color		Approx. WT.	
	lbf.	kN	in	mm	outer	inner	lbs.	kg
ICSS-3-5000	5000	22.241	3.0	76.2	GREY	---	99.00	44.91
ICSS-3-5600	5600	24.91	3.0	76.2	GREY	WHITE	100.60	45.64
ICSS-3-6000	6000	26.69	3.0	76.2	BROWN	---	100.00	45.36
ICSS-3-7000	7000	31.138	3.0	76.2	BROWN	YELLOW	101.40	46.00
ICSS-3-7600	7600	33.807	3.0	76.2	BROWN	GREY	101.80	46.18
ICSS-3-8000	8000	35.586	3.0	76.2	BROWN	RED	102.24	46.38
ICSS-3-9000	9000	40.034	3.0	76.2	BROWN	BLUE	105.00	47.63



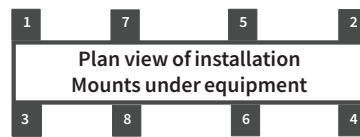
### Model

### DIMENSION : ICSS-3-5000-9000

L		L1		H		w1		W2		W3	
in	mm	in	mm	in	mm	in	mm	in	mm	in	mm
11 1/2	295	4 3/4	121	8 1/4	209	13 3/16	334	10 7/16	265	10 1/2	267
T		M		N		a		Ød		ØD	
in	mm	in	mm	in	mm	in	mm	in	mm	in	mm
5/8	16	3 3/8	86	1 5/16	34	1 7/16	36	1/2	13	1/2	13
spring Adjustment Bolt											
3/4"											

### ISOLATOR'S LOCATIONS

1:	5:
2:	6:
3:	7:
4:	8:



### Notes:

- ICSS-3-5000-9000 type isolators are designed for minimum 1g lateral seismic and wind load when attached to steel structure. Housing is made from high strength steel
- ICSS-3-5000-9000 Isolators are all Pre-Compressed to allow the lowest overall installation height and to offer significant labor saving during installation
- All springs have additional travel to solid equal to 50% of the Rated Deflection with minimum Kx/Ky ratio of 1.0 - All Elements are safe at solid load
- Spring(s) are powder - coated to provide maximum corrosion resistance , and are color-coded for easy identification at site - see table above
- Hot-Dip Galvanized finish for Housing to offer maximum corrosion resistance for isolator - Hardware and Spring Compression Cup are zinc -electroplated
- ICSS-3-5000-9000 isolators are designed to allow replacement of Neoprene grommet without disturbing equipment. Neoprene grommet are installed to prevent metal to metal contact.
- Same Thickness and dimensions of isolator top plate, must be installed on top of isolator, when less than 80% of isolator's top plate is covered.

PROJECT INFORMATION		EQUIPMENT INFORMATION		Canada location	USA Location
Customer:		Type:		35 Siltan Road Woodbridge ON L4L 7Z8 CANADA T: 905-856-5001	3021 E Coronado St. Anaheim, CA.,92806 U.S.A T: 949-788-2930
Project:		Qty Required:			
Drawing No:		Operating Weight:			
Notes:				Tool free : 1-888-831-3311 <a href="http://www.isotechindustries.com">www.isotechindustries.com</a>	

