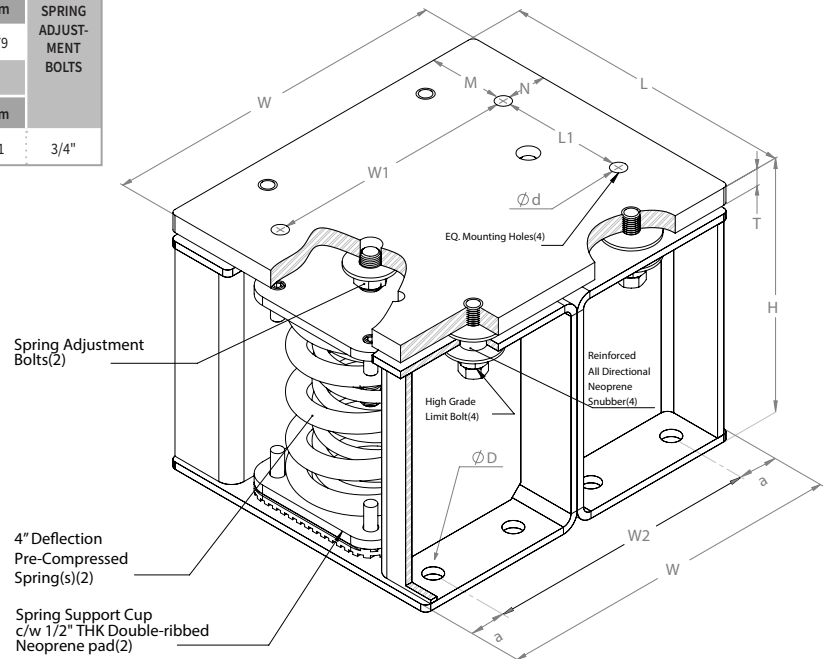
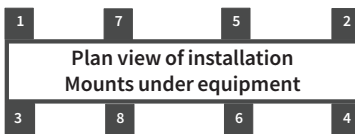


SPECIFICATIONS : ICSN-4" DEFLECTION RESTRAINED SPRING ISOLATOR

Model	Rated Load		Rated Deflection		Spring Color		Approx. WT.	
	lbf.	kN	in	mm	outer	inner	lbs.	kg
ICSN- 4-5600	5600	24.91	4.0	101.6	BLUE	---	239.00	108.41
ICSN- 4-6000	6000	26.69	4.0	101.6	BROWN	---	243.00	110.23
ICSN- 4-6600	6600	29.359	4.0	101.6	BROWN	RED	244.00	110.68
ICSN- 4-7000	7000	31.138	4.0	101.6	BROWN	YELLOW	240.00	108.87
ICSN- 4-7200	7200	32.028	4.0	101.6	BROWN	ORANGE	245.00	111.14
ICSN- 4-7600	7600	33.807	4.0	101.6	BLACK	---	245.00	111.14
ICSN- 4-8000	8000	35.586	4.0	101.6	BLACK	WHITE	246.00	111.59
ICSN- 4-9000	9000	40.034	4.0	101.6	BLACK	GREY	246.00	111.59
ICSN- 4-10000	10000	44.482	4.0	101.6	BLACK	BROWN	247.00	112.04

Model												
DIMENSION : ICSN-4-5600-10000												
L		W		W1		H		T		W2		SPRING ADJUSTMENT BOLTS
in	mm	in	mm	in	mm	in	mm	in	mm	in	mm	
12 3/4	324	15 1/2	384	11 1/2	283	11	279	5/8	16	11	279	
ø D	ø d	L1		M		N		a				
in	mm	in	mm	in	mm	in	mm	in	mm	in	mm	
1/2	13	1 1/16	18	5 3/4	146	3 1/2	89	2	51	1 1/2	41	3/4"

ISOLATOR'S LOCATIONS	
1:	5:
2:	6:
3:	7:
4:	8:



Notes:

- ICSN-4-5600-10000 isolators are all Pre-Compressed to allow the lowest overall installation height and to offer significant labor saving during installation
- All springs have additional travel to solid equal to 50% of the Rated Deflection with minimum Kx/Ky ratio of 1.0 - All Elements are safe at solid load
- Spring(s) are powder - coated to provide maximum corrosion resistance , and are color-coded for easy identification at site - see table above
- Hot-Dip Galvanized finish for Housing to offer maximum corrosion resistance for isolator - Hardware and Spring Compression Cup are zinc -electroplated
- ICSN-4-5600-10000 isolators are designed to allow replacement of Neoprene grommet without disturbing equipment. Neoprene grommet are installed to prevent metal to metal contact
- Same thickness plate, with the same dimensions of isolator top plate, must be installed on top of isolator, when less than 80% of isolator's top plate is covered

PROJECT INFORMATION		EQUIPMENT INFORMATION		Canada location	USA Location
Customer:		Type:		35 Silton Road Woodbridge ON L4L 7Z8 CANADA T: 905-856-5001	3021 E Coronado St. Anaheim, CA.,92806 U.S.A T: 949-788-2930
Project:		Qty Required:			
Drawing No:		Operating Weight:			
Notes:				Tool free : 1-888-831-3311 www.isotechindustries.com	

