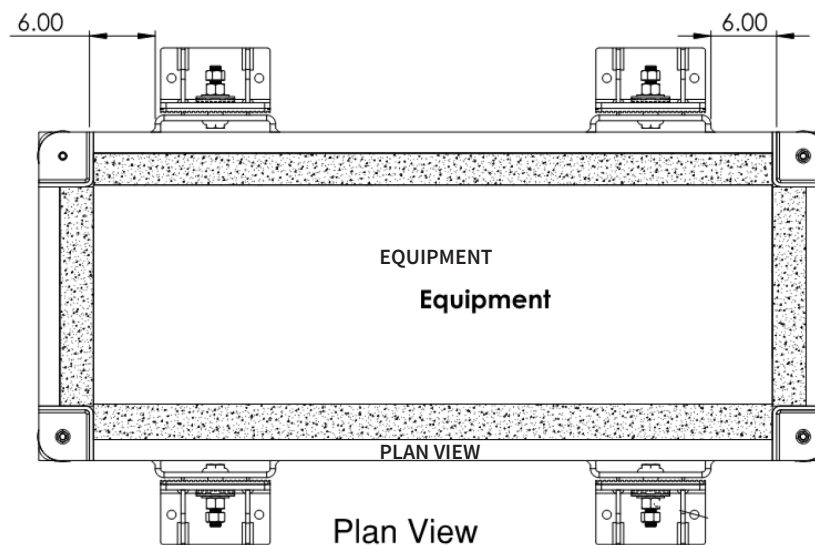


IMPORTANT NOTE

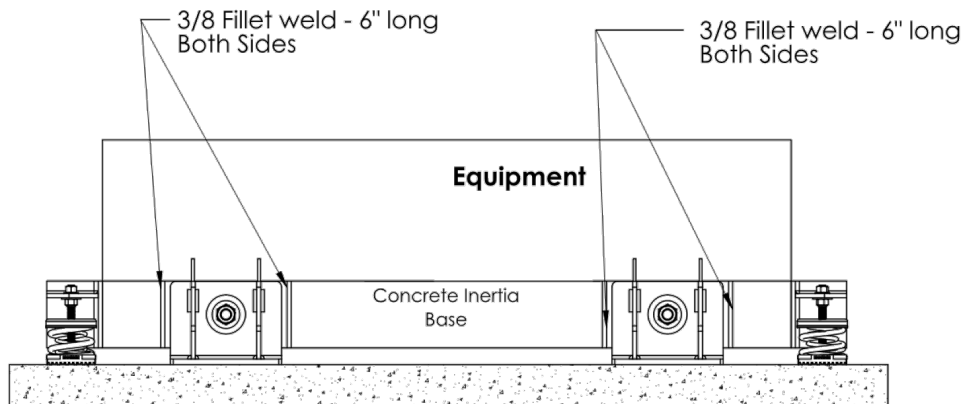
Concrete Inertia Base Installation Instructions – ICIB-NS Installation Instructions – must be followed and the following items must be addressed before adding IBSS-4000 Seismic Snubber to the system:

1. IOSB Open Springs have to be installed and adjusted to the desired deflection – follow ICIB-NS for details
2. 2 x 4 Shims should have been removed to leave 1.5" air gap between concrete inertia base and housekeeping pad
3. Concrete Inertia Base must be floating freely on spring isolators


Step 1: Locate each IBSS Seismic Snubber 6" from edge of isolator bracket on the longer side of Concrete Inertia Base as shown below:



Step 2: Ensure IBSS Seismic Snubber have proper support and sit flat on Housekeeping pad. Weld IBSS brackets to Concrete Inertia Base Steel Frame as shown Below:

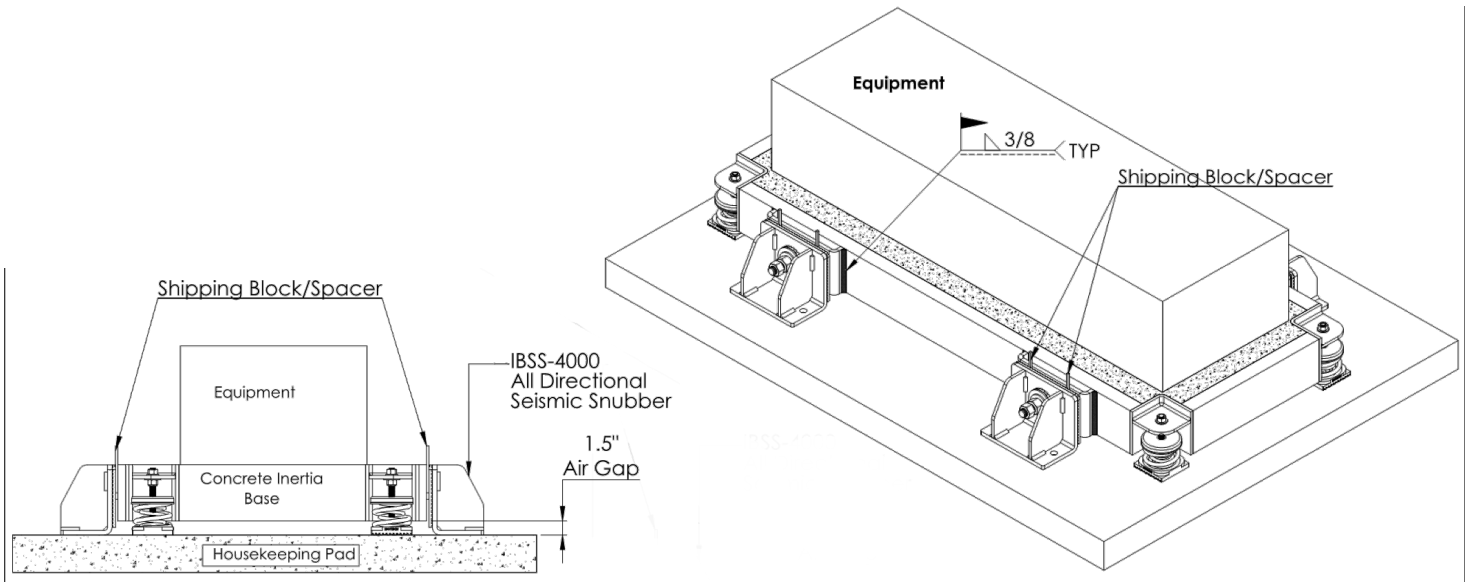


PROJECT INFORMATION		EQUIPMENT INFORMATION		Canada location	USA Location
Customer:		Type:		35 Silton Road Woodbridge ON L4L 7Z8 CANADA T: 905-856-5001	3021 E Coronado St. Anaheim, CA.,92806 U.S.A T: 949-788-2930
Project:		Qty Required:			
Drawing No:		Operating Weight:			
Notes:					

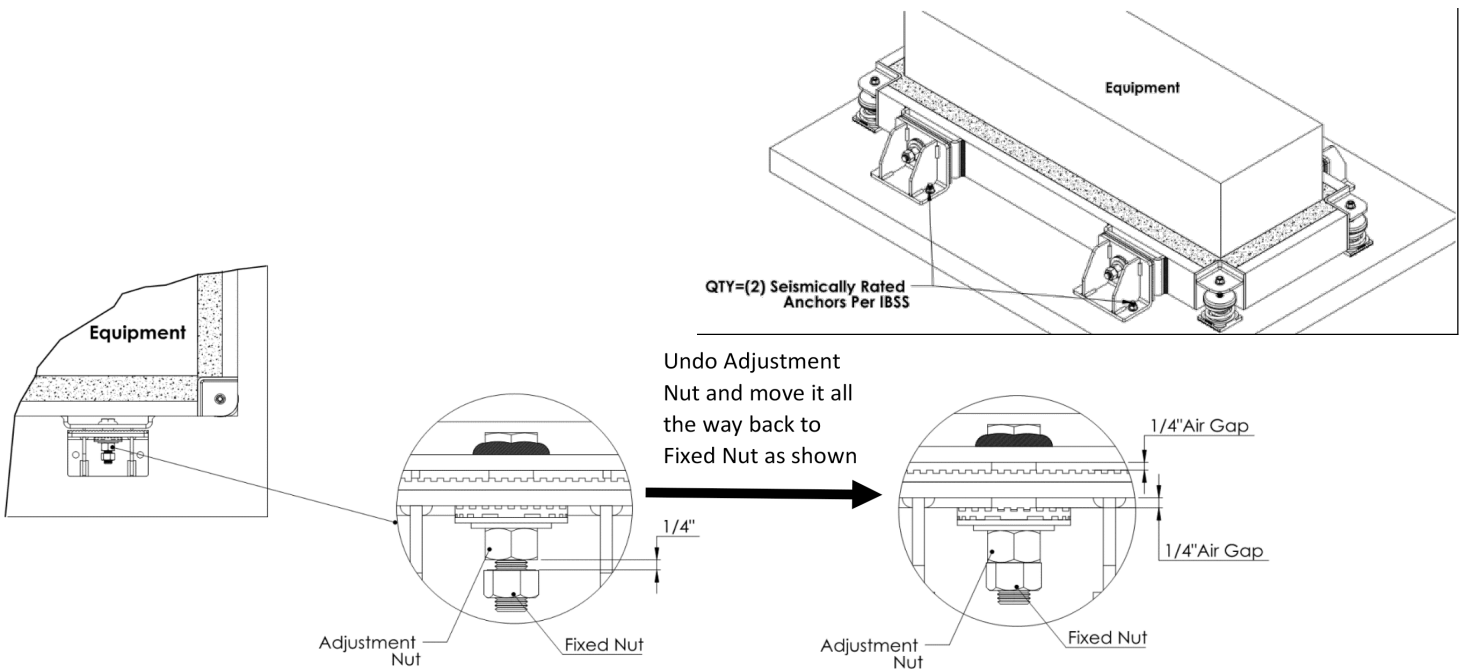


Tool free : 1-888-831-3311
www.isotechindustries.com






Step 3: Undo Adjustment Nut and move it all the way back to Fixed Nut as shown; remove Shipping Blocks/Spacers



Step 4: Review Submittal drawing, follow calculations for anchor details and anchor manufacturer instructions for the installation of seismically rated concrete anchors

PROJECT INFORMATION		EQUIPMENT INFORMATION		Canada location	USA Location
Customer:		Type:		35 Siltan Road Woodbridge ON L4L 7Z8 CANADA T: 905-856-5001	3021 E Coronado St. Anaheim, CA.,92806 U.S.A T: 949-788-2930
Project:		Qty Required:			
Drawing No:		Operating Weight:			
Notes:					



Tool free : 1-888-831-3311
www.isotechindustries.com