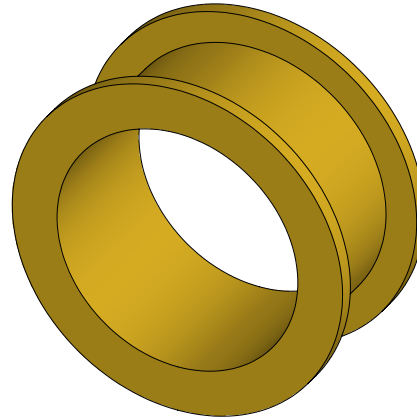
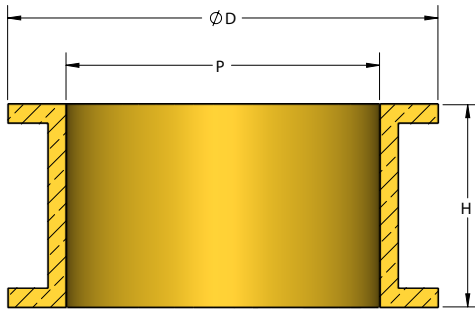


SPECIFICATIONS : IBBC- ISOTECH HEAVY DUTY MACHINED BRASS RING 1" - 4"

Model	Pipe Size	H		øD		Approx. WT.	
	P (in)	in	mm	in	mm	lbs	kg
IBBC-100	1	2	50.8	1.75	44.45	0.34	0.15
IBBC-125	1.25	2	50.8	2.1	53.34	0.56	0.25
IBBC-150	1.5	2	50.8	2.4	61.00	0.62	0.28
IBBC-200	2	2	50.8	3.0	76.20	0.83	0.38
IBBC-250	2.5	2	50.8	3.5	88.90	0.95	0.43
IBBC-300	3	2	50.8	4.3	109.22	1.75	0.79
IBBC-400	4	2	50.8	5.3	134.62	2.25	1.02



Note:

1. ISOTECH machined Brass Rings are made of specialty Brass Alloy to get maximum bonding strength when soldered to Copper pipe
2. Use Lead-free solder to secure ISOTECH Machined Brass Ring to copper pipe as shown
3. IBBC are designed for ISOTECH Riser Clamps
4. Follow soldering instructions for proper installation of brass ring on copper pipe
5. Solder ISOTECH machined brass ring on copper pipe before adding ISOTECH Riser Clamp
6. Ensure Riser Clamp is rested against brass ring lip on load direction

PROJECT INFORMATION		EQUIPMENT INFORMATION		Canada location	USA Location
Customer:		Type:		35 Silton Road Woodbridge ON L4L 7Z8 CANADA T: 905-856-5001	3021 E Coronado St. Anaheim, CA.,92806 U.S.A T: 949-788-2930
Project:		Qty Required:			
Drawing No:		Operating Weight:			
Notes:				Tool free : 1-888-831-3311 www.isotechindustries.com	

