

## SPECIFICATIONS : ISOTECH EXPANSION JOINT CARBON STEEL PIPE WITH GROOVED END

PART # OR SKU	DIA (In)	'A' OAL (In)	'B' WIDTH (SQ.) (In)	RATED STROKE		WEIGHT (LBS)	QTY
				COMP. (In)	EXT. (In)		
IEJ-CS300-GR2-1	1	10 ½	2	1 ½	½	2 ¾	
IEJ-CS300-GR2-1.25	1 ¼	10 ½	2	1 ½	½	3 ¼	
IEJ-CS300-GR2-1.5	1 ½	10 ½	2 ½	1 ½	½	4	
IEJ-CS300-GR2-2	2	10 ½	3	1 ½	½	5 ¼	
IEJ-CS300-GR2-2.5	2 ½	10 ½	3 ½	1 ½	½	7 ½	
IEJ-CS300-GR2-3	3	10 ½	4 ½	1 ½	½	9 ½	
IEJ-CS300-GR2-4	4	10 ½	5 ½	1 ½	½	10 ½	

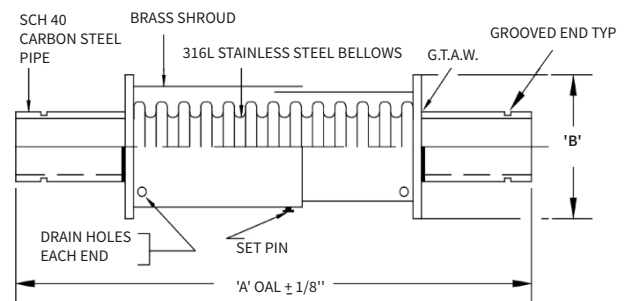
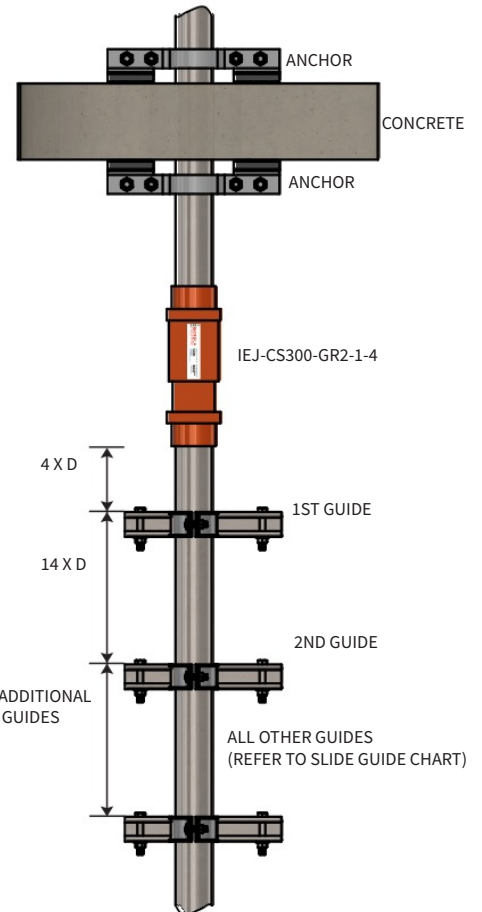
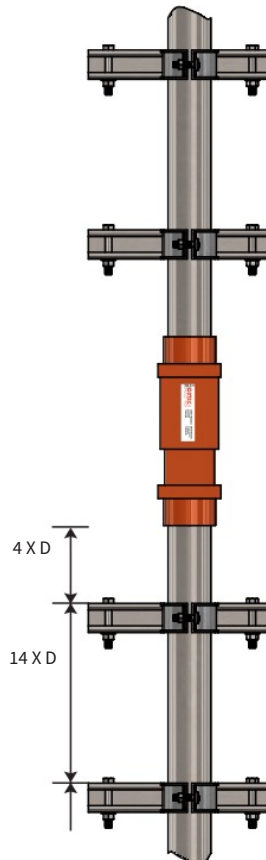
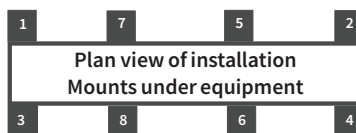
**IMPORTANT NOTE:** EXPANSION COMPENSATOR'S ARE DESIGNED FOR A TOTAL OF 2" MOVEMENT; ACCOMMODATING 1-1/2" PIPE THERMAL EXPANSION AND 1/2" PIPE THERMAL CONTRACTION

### MATERIALS OF CONSTRUCTION


SHROUD :	BRASS
BELLOWS :	316L STAINLESS STEEL
END FITTINGS :	CARBON STEEL

### ISOLATOR'S LOCATIONS

1:	5:
2:	6:
3:	7:
4:	8:



DESIGN PRESSURE @ 70°F = 300 PSIG

PROJECT INFORMATION		EQUIPMENT INFORMATION		Canada location	USA Location	
Customer:		Type:		35 Siltan Road Woodbridge ON L4L 7Z8 CANADA T: 905-856-5001	3021 E Coronado St. Anaheim, CA.,92806 U.S.A T: 949-788-2930	
Project:		Qty Required:				
Drawing No:		Operating Weight:				
Notes:						

COPYRIGHT: UNLESS OTHERWISE AGREED OR STATED IN WRITING, ALL INFORMATION AND DESIGNS DISPLAYED WITHIN ARE ALL THE PROPERTY OF ISOTECH INDUSTRIES INC. AND MAY NOT BE DUPLICATED OR DISTRIBUTED OUTSIDE OF ISOTECH INDUSTRIES INC. WITH THE EXCEPTION OF AUTHORIZED PERSONS WITH LEGITIMATE NEED TO KNOW WHO BY THE USE OF THIS RECOGNIZE ISOTECH INDUSTRIES INC. OWNERSHIP AND WILL COMPLY TO MAINTAIN THIS INFORMATION AND DESIGN IN STRICT CONFIDENCE.