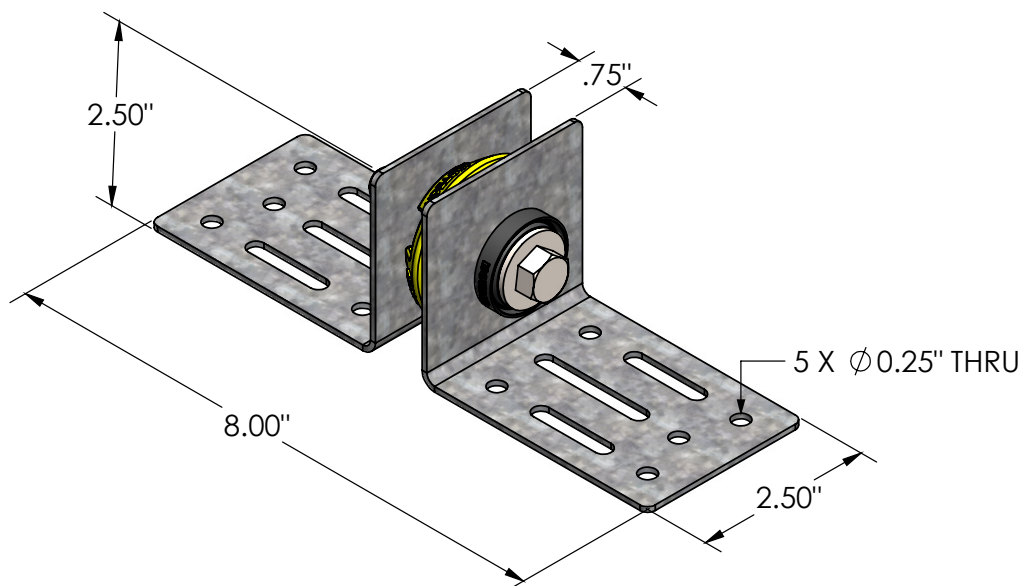
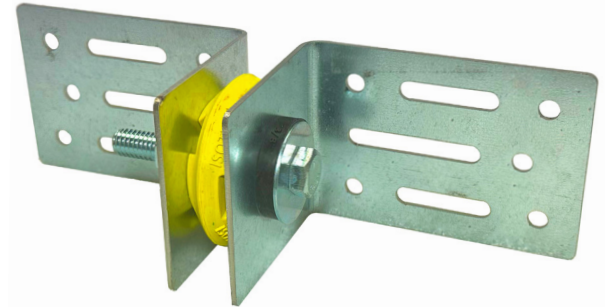


## Application

- Where acoustical chase wall attachment is required, IDWB-358 brackets provide a strong and rigid connection. The mounting brackets allow the chase walls to support each other while continuing to be acoustically isolated, reduce air and structure-borne vibration transferred between the walls.

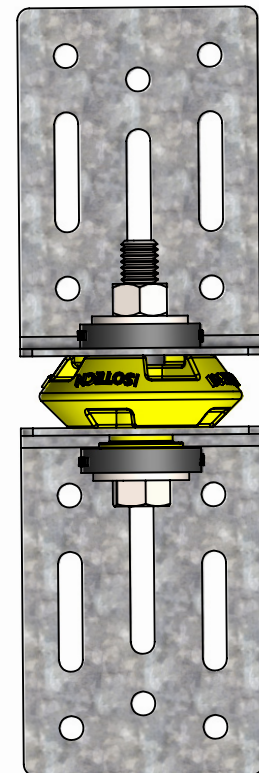
## Features


- Designed for acoustic applications to extend and attach chase walls together without increasing vibration and structure noise
- Heavy duty brackets remove the need for larger steel members or additional bracing
- No additional assembly required
- Cost effective method in reducing and isolating airborne noises and structure-borne vibration



## Installation

- Distance between walls must be a minimum of 2" up to a maximum of 7"
- Smaller distances can be achieved by rotating the bracket assembly and installing diagonally
- Ensure brackets are not fastened to opposing wall
- Opposing walls must not be in contact with each other



PROJECT INFORMATION		EQUIPMENT INFORMATION		Canada location	USA Location	
Customer:		Type:		35 Siltan Road Woodbridge ON L4L 7Z8 CANADA T: 905-856-5001	3021 E Coronado St. Anaheim, CA.,92806 U.S.A T: 949-788-2930	
Project:		Qty Required:				
Drawing No:		Operating Weight:				
Notes:						

COPYRIGHT: UNLESS OTHERWISE AGREED OR STATED IN WRITING, ALL INFORMATION AND DESIGNS DISPLAYED WITHIN ARE ALL THE PROPERTY OF ISOTECH INDUSTRIES INC. AND MAY NOT BE DUPLICATED OR DISTRIBUTED OUTSIDE OF ISOTECH INDUSTRIES INC. WITH THE EXCEPTION OF AUTHORIZED PERSONS WITH LEGITIMATE NEED TO KNOW WHO BY THE USE OF THIS RECOGNIZE ISOTECH INDUSTRIES INC. OWNERSHIP AND WILL COMPLY TO MAINTAIN THIS INFORMATION AND DESIGN IN STRICT CONFIDENCE.