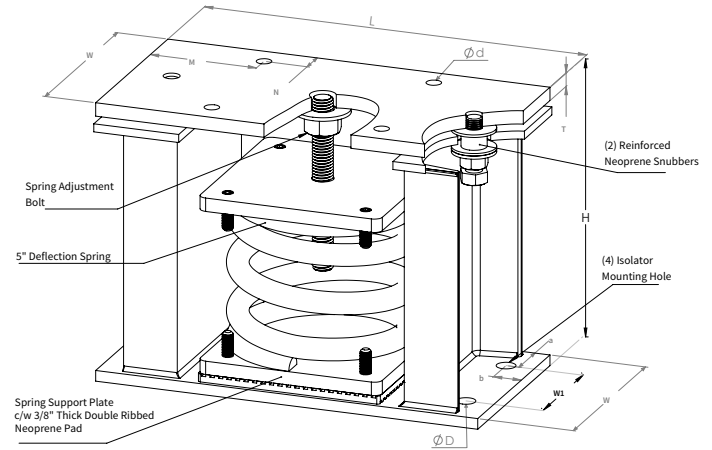


## SPECIFICATIONS : ICSS-5" DEFLECTION RESTRAINED SPRING ISOLATOR

Model	Rated Load		Rated Deflection		Spring Color		Approx. WT.	
	lbf.	Kn	in	mm	outer	inner	lbs.	Kg
ICSS-5-200	200	0.89	5.0	127.0	ORANGE	---	156.00	70.76
ICSS-5-500	500	2.225	5.0	127.0	BLUE	---	158.00	71.67
ICSS-5-1000	1000	4.449	5.0	127.0	RED	---	161.00	73.03
ICSS-5-1500	1500	6.673	5.0	127.0	RED	YELLOW	161.00	73.03
ICSS-5-2000	2000	8.897	5.0	127.0	GREEN	---	163.00	73.94
ICSS-5-2500	2500	11.121	5.0	127.0	GREEN	YELLOW	162.00	73.48
ICSS-5-3000	3000	13.345	5.0	127.0	GREY	---	163.00	73.94
ICSS-5-3500	3500	15.569	5.0	127.0	BLACK	---	164.00	73.39
ICSS-5-4000	4000	17.793	5.0	127.0	BLACK	YELLOW	165.00	74.84
ICSS-5-4500	4500	20.017	5.0	127.0	WHITE	---	166.00	75.30
ICSS-5-5000	5000	22.793	5.0	127.0	BROWN	---	167.00	75.75



\* Load Capacity Envelope: Concrete loads are based on 4000 psi reinforced concrete with minimum 6" edge distance and can be considered for non seismic applications only.

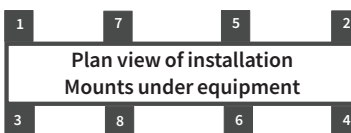
### Model

#### DIMENSION : ICSS-5-200-5000

L		W		W1		H		T		W2	
in	mm	in	mm	in	mm	in	mm	in	mm	in	mm
18.0	458	9.0	229	6 1/2	165	13	330	5/8	16	5.0	127
ØD		Ød		M		N		a		SPRING ADJUSTMENT BOLTS	
in	mm	in	mm	in	mm	in	mm	in	mm		
1 3/16	21	1 1/16	18	5.0	13	1 1/4	32	2	51	1"	

### ISOLATOR'S LOCATIONS

1:	5:
2:	6:
3:	7:
4:	8:



### Notes:

- ICSS-5-200-5000 Isolators are all Pre-Compressed to allow the lowest overall installation height and to offer significant labor saving during installation
- All springs have additional travel to solid equal to 50% of the Rated Deflection with minimum Kx/Ky ratio of 1.0 - All Elements are safe at solid load
- Spring(s) are powder - coated to provide maximum corrosion resistance , and are color-coded for easy identification at site - see table above
- Powder-coated finish for Housing Spring Compression Plate and Spring Support Plate to offer maximum corrosion resistance for isolator - Hardware are zinc -electroplated
- ICSS-5-200-5000 isolators are designed to allow replacement of Reinforced Snubber without disturbing equipment. Reinforced Snubbers are installed to prevent metal to metal contact

PROJECT INFORMATION		EQUIPMENT INFORMATION		Canada location	USA Location
Customer:		Type:		35 Silton Road Woodbridge ON L4L 7Z8 CANADA T: 905-856-5001	3021 E Coronado St. Anaheim, CA.,92806 U.S.A T: 949-788-2930
Project:		Qty Required:			
Drawing No:		Operating Weight:			
Notes:				Tool free : 1-888-831-3311 <a href="http://www.isotechindustries.com">www.isotechindustries.com</a>	