

ICSS-3 SEISMICALLY RATED ISOLATOR ATTACHMENT TO STEEL STRUCTURE

File No.: ISCOS-ICSS-3-5000-9000

Date: 03/29/22

ISOIN-ICSS-3-5000-9000, Installation Instructions Document, to be Reviewed for Installation

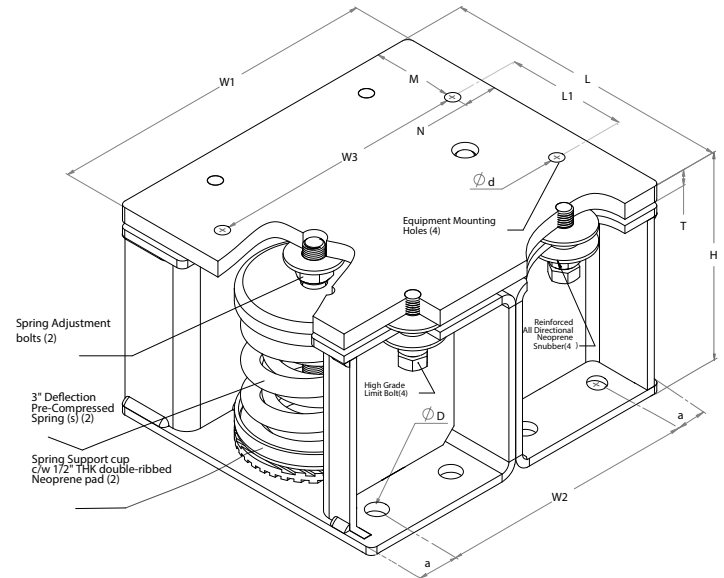
SPECIFICATIONS : ICSS-3" DEFLECTION RESTRAINED SPRING ISOLATOR

Model	Rated Load		Rated Deflection		Spring Color		Approx. WT.	
	lbf.	Kn	in	mm	outer	inner	Lbs.	Kg
ICSS-3-5000	5000	22.241	3.0	76.2	Grey	---	99.00	44.91
ICSS-3-5600	5600	24.91	3.0	76.2	Black	Grey	100.60	45.64
ICSS-3-6000	6000	26.69	3.0	76.2	Brown	---	100.00	45.36
ICSS-3-7000	7000	31.138	3.0	76.2	Brown	YELLOW	101.40	46.00
ICSS-3-7600	7600	33.807	3.0	76.2	Brown	Grey	101.80	46.18
ICSS-3-8000	8000	35.586	3.0	76.2	Brown	Brown	102.24	46.38
ICSS-3-8400	8400	37.365	3.0	76.2	Brown	Orange	103.40	46.91
ICSS-3-9000	9000	40.034	3.0	76.2	Brown	Red	105.00	47.63

Model

DIMENSION : ICSS-3-5000-9000

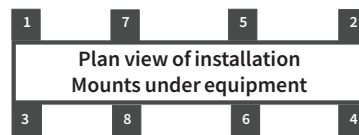
L		L1		H		w1		W2		W3	
in	mm	in	mm	in	mm	in	mm	in	mm	in	mm
11 5/8	295	4 3/4	121	8 1/4	209	13 3/16	334	10 7/16	265	10 1/2	267
T		M		N		a		Ød		Ø D	
in	mm	in	mm	in	mm	in	mm	in	mm	in	mm
5/8	16	3 3/8	86	1 1/16	34	1 7/16	36	1/2	13	1/2	13
spring Adjust ment Bolt											
3/4"											



* Load Capacity Envelope: Concrete loads are based on 4000 psi reinforced concrete with minimum 6" edge distance and can be considered for non seismic applications only.


ISOLATOR'S LOCATIONS

1:	5:
2:	6:
3:	7:
4:	8:



Notes:

- ICSS -3-5000-9000 type isolators are designed for minimum 1g lateral seismic and wind load when attached to steel structure. Housing is made from high strength steel
- ICSS -3-5000-9000 Isolators are all Pre-Compressed to allow the lowest overall installation height and to offer significant labor saving during installation
- All springs have additional travel to solid equal to 50% of the Rated Deflection with minimum Kx/Ky ratio of 1.0 - All Elements are safe at solid load
- Spring(s) are powder - coated to provide maximum corrosion resistance , and are color-coded for easy identification at site - see table above
- Hot-Dip Galvanized finish for Housing to offer maximum corrosion resistance for isolator - Hardware and Spring Compression Cup are zinc -electroplated
- ICSS-3-5000-9000 isolators are designed to allow replacement of Neoprene grommet without disturbing equipment. Neoprene grommet are installed to prevent metal to metal contact.

PROJECT INFORMATION		EQUIPMENT INFORMATION		Canada location	USA Location	
Customer:		Type:		35 Siltan Road Woodbridge ON L4L 7Z8 CANADA T: 905-856-5001	3021 E Coronado St. Anaheim, CA.,92806 U.S.A T: 949-788-2930	
Project:		Qty Required:				
Drawing No:		Operating Weight:				
Notes:						