

## RISER BRANCH SPRING HANGER

File No.: ISCOS-IRBH-1-60-1200

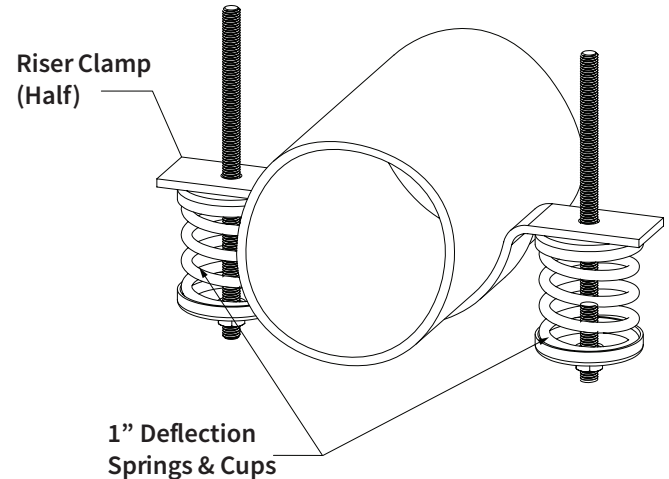
Date: 12/15/17

ISOIN-IRBH-1-60-1200, Installation Instructions document, to be reviewed for installation

### 1" DEFLECTION RISER BRANCH SPRING HANGER

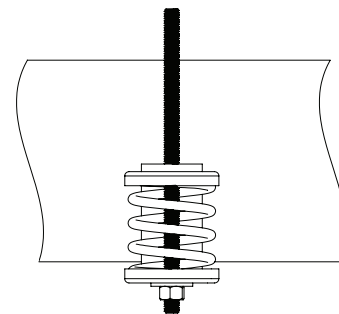
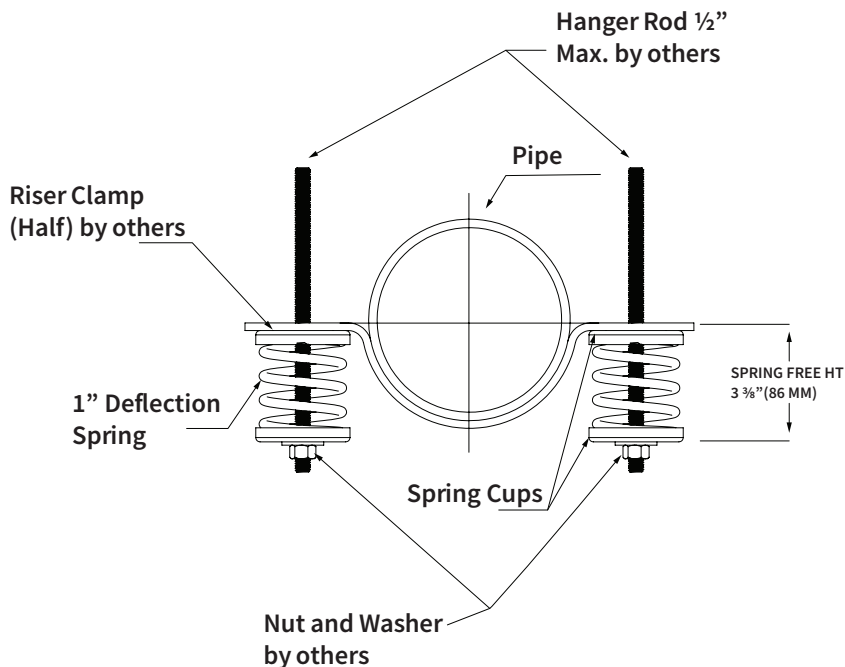
Model	Rated Load		Rated Deflection		Spring Color 2 Springs	Approx. WT.	
	Lb.	KN	in	mm		Lb.	Kg
IRBH-1-60	60	0.267	1.0	25.4	YELLOW	2.08	0.95
IRBH-1-100	100	0.445	1.0	25.4	GREEN	2.20	1
IRBH-1-200	200	0.89	1.0	25.4	BLACK	2.68	1.22
IRBH-1-300	300	1.335	1.0	25.4	RED	2.70	1.23
IRBH-1-400	400	1.78	1.0	25.4	ORANGE	2.90	1.32
IRBH-1-600	600	2.669	1.0	25.4	YELLOW	2.95	1.34
IRBH-1-800	800	3.559	1.0	25.4	GREEN	3.20	1.46
IRBH-1-1000	1000	4.449	1.0	25.4	ORANGE	3.50	1.59
IRBH-1-1200	1200	5.338	1.0	25.4	GREY	3.65	1.66

Hardware not included - Spring Cup: Zinc Supplied



#### Notes:

- Spring(s) are powder - coated to provide maximum corrosion resistance , and are color - coded for easy identification at site - see table for more information
- All springs have additional travel to solid equal to 50% of the Rated Deflection with minimum Kx/Ky ratio of 0.9 - All Elements are safe at solid load



PROJECT INFORMATION		EQUIPMENT INFORMATION		<p>Canada location    USA Location</p> <p>35 Siltan Road    7700 Irvine Centre Drive Woodbridge ON    Suite 800 L4L 7Z8 CANADA    Irvine, CA, 92618 U.S.A T: 905-856-5001    T: 949-788-2930 <a href="http://www.isotechindustries.com">www.isotechindustries.com</a></p> <p><b>VISCA</b> MEMBER</p>
Customer:		Type:		
Project:		Qty Required:		
Drawing No:		Operating Weight:		
Notes:				