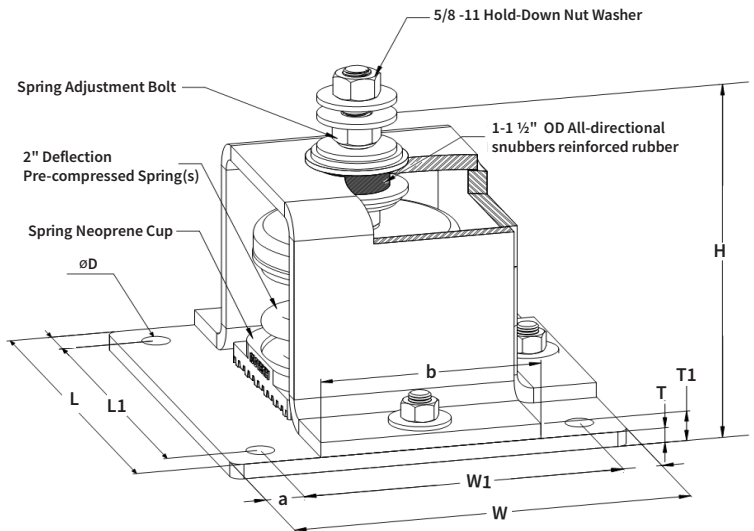
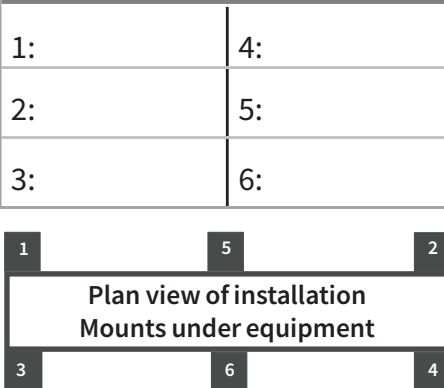


SPECIFICATIONS - 2" DEFLECTION RATED RESTRAINED SPRING - FOR ATTACHMENT TO CONCRETE STRUCTURE

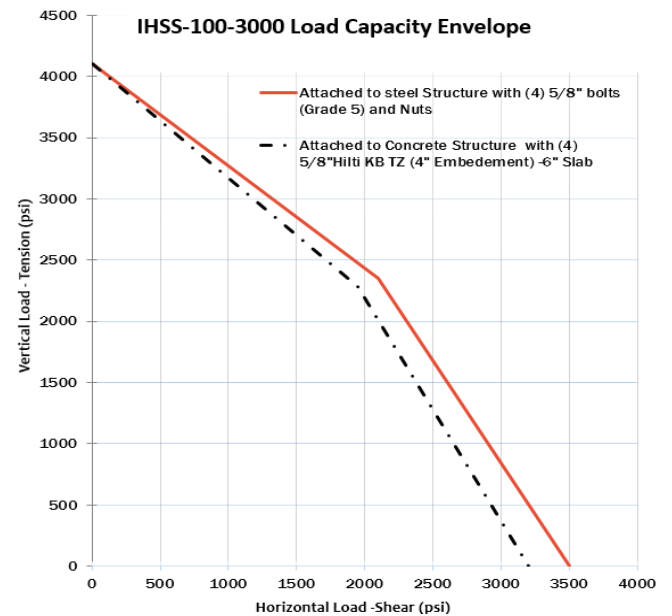
Model	Rated Load		Rated Deflection		Spring Color		Approx. WT.	
	lb.	KN	in	mm	outer	inner	lb.	Kg
IHSS-2-100	100	0.445	2.0	50.8	RED	---	25.50	11.57
IHSS-2-200	200	0.89	2.0	50.8	WHITE	---	25.60	11.62
IHSS-2-300	300	1.335	2.0	50.8	WHITE	GREY	25.80	11.71
IHSS-2-400	400	1.78	2.0	50.8	WHITE	ORANGE	25.90	11.75
IHSS-2-500	500	2.225	2.0	50.8	BROWN	---	26.00	11.80
IHSS-2-600	600	2.669	2.0	50.8	BROWN	GREY	26.10	11.84
IHSS-2-800	800	3.559	2.0	50.8	BLUE	---	26.30	11.93
IHSS-2-1000	1000	4.449	2.0	50.8	BLUE	GREY	26.40	11.98
IHSS-2-1200	1200	5.338	2.0	50.8	GREEN	ORANGE	27.00	12.25
IHSS-2-1500	1500	6.673	2.0	50.8	GREY	---	26.80	12.16
IHSS-2-1800	1800	8.007	2.0	50.8	GREY	YELLOW	27.30	12.39
IHSS-2-2000	2000	8.897	2.0	50.8	YELLOW	---	26.90	12.21
IHSS-2-2200	2300	9.787	2.0	50.8	YELLOW	ORANGE	27.50	12.48
IHSS-2-2500	2500	11.121	2.0	50.8	ORANGE	---	27.10	12.3
IHSS-2-2800	2800	12.455	2.0	50.8	ORANGE	YELLOW	27.90	12.66
IHSS-2-3000	3000	13.345	2.0	50.8	BLACK	---	27.50	12.48

Model					
IHSS-2-100-3000					
L		W		H	
in	mm	in	mm	in	mm
10.0	254	9.0	229	7 1/16	186
L1		W1		ø D	
in	mm	in	mm	in	mm
8 1/4	210	7 1/4	185	1 1/16	18
T1		T		SPRING BOLT ADJUSTMENT	
in	mm	in	mm		
3/4	20	3/8	10		
a		b		5/8"	
in	mm	in	mm		
7/8	23	5.0	127		

ISOLATOR LOCATIONS



* Anchor capacity is based on 4000 psi reinforce concrete(cracked concrete) with minimum 6" edge distance. Hilti anchors- Type KBTZ - were considered for all calculations. Detailed calculations must be performed if different anchors are used.



Notes:

- IHSS-2-100-3000 isolators are all Pre-Compressed to allow the lowest overall installation height and to offer significant labor saving during installation
- All springs have additional travel to solid equal to 50% of the Rated Deflection with minimum Kx/Ky ratio of 1.0
 - All Elements are safe at solid load
- Spring(s) are powder - coated to provide maximum corrosion resistance , and are color-coded for easy identification at site - see table above
- Hot-Dip Galvanized finish for Housing to offer maximum corrosion resistance for isolator - Hardware and Spring Compression Cup are zinc - electroplated
- 1/2" THK plate, with the same dimensions of isolator top plate, must be installed on top of isolator, when less than 80% of isolator's top plate is covered

PROJECT INFORMATION		EQUIPMENT INFORMATION		Canada location 35 Siltan Road Woodbridge ON L4L 7Z8 CANADA T: 905-856-5001 www.isotechindustries.com	USA Location 7700 Irvine Centre Drive Suite 800 Irvine, CA, 92618 U.S.A T: 949-788-2930	VISCOMA MEMBER
Customer:		Type:				
Project:		Qty Required:				
Drawing No:		Operating Weight:				
Notes:						