

## SPECIFICATIONS - 2" DEFLECTION RESTRAINED SPRING AND NEOPRENE PAD FOR ATTACHMENT TO STEEL STRUCTURE

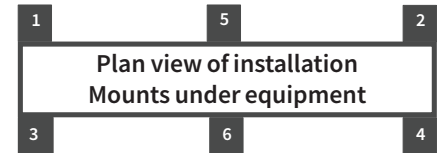
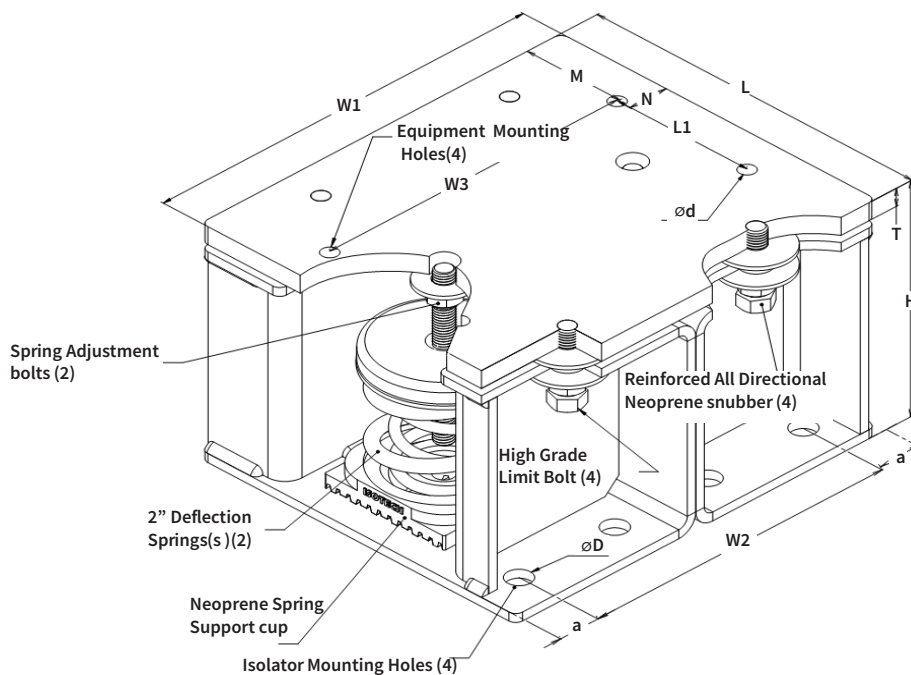
Model	Rated Load		Rated Deflection		Spring Color		Approx. WT.	
	lb.	KN	in	mm	outer	inner	Lb.	Kg
ICSS-2-5000	5000	22.241	2.0	50.8	ORANGE	---	99.00	44.91
ICSS-2-5600	5600	24.91	2.0	50.8	ORANGE	YELLOW	100.60	45.64
ICSS-2-6000	6000	26.69	2.0	50.8	BLACK	---	100.00	45.36
ICSS-2-6600	6600	29.359	2.0	50.8	BLACK	YELLOW	101	45.81
ICSS-2-7000	7000	31.138	2.0	50.8	BLACK	WHITE	101.40	46
ICSS-2-7600	7600	33.807	2.0	50.8	BLACK	RED	101.80	46.18
ICSS-2-8000	8000	35.586	2.0	50.8	BLACK	BLUE	102.24	46.38
ICSS-2-9000	9000	40.034	2.0	50.8	BLACK	BROWN	103.40	46.91

### MODEL - ICSS - 2 - 5000 - 9000

L1		W1		H		T		W2 & W3		ø D	
in	mm	in	mm	in	mm	in	mm	in	mm	in	mm
11	279	13 3/16	335	8 7/16	208	7/8	16	10 7/16	265	1/2	13
ø d		M		N		a		Spring Adjustment Bolt			
in	mm	in	mm	in	mm	in	mm				
1/2	13	3 3/8	86	1 1/16	34	1 1/16	36	5/8"			

### Notes:

- ICSS -2-5000-9000 type isolators are designed for minimum 1g lateral seismic and wind load when attached to steel structure. Housing is made from high strength steel
- ICSS -2-5000-9000 Isolators are all Pre-Compressed to allow the lowest overall installation height and to offer significant labor saving during installation
- All springs have additional travel to solid equal to 50% of the Rated Deflection with minimum Kx/Ky ratio of 1.0 - All Elements are safe at solid load
- Spring(s) are powder - coated to provide maximum corrosion resistance , and are color-coded for easy identification at site - see table above
- Hot-Dip Galvanized finish for Housing to offer maximum corrosion resistance for isolator - Hardware and Spring Compression Cup are zinc -electroplated
- ICSS -2-5000-9000 isolators are designed to allow replacement of Neoprene grommet without disturbing equipment. Neoprene grommet are installed to prevent metal to metal contact



### ISOLATOR'S LOCATIONS

1:	4:
2:	5:
3:	6:

PROJECT INFORMATION		EQUIPMENT INFORMATION		<div>Canada location</div> <div>35 Siltan Road Woodbridge ON L4L 7Z8 CANADA T: 905-856-5001 <a href="http://www.isotechindustries.com">www.isotechindustries.com</a></div> <div>USA Location</div> <div>7700 Irvine Centre Drive Suite 800 Irvine, CA, 92618 U.S.A T: 949-788-2930</div> <div>VISCMA MEMBER</div>
Customer:		Type:		
Project:		Qty Required:		
Drawing No:		Operating Weight:		
Notes:				