

Specifications - 2" Deflection Seismically Rated Floor Mounted Spring Isolator

Model	Rated Load		Rated Deflection		Spring Color	Approx. WT.	
	lb.	KN	in	mm		lb.	Kg
IHSSA-2-100	100	0.445	2	50.8	Grey	12.57	5.71
IHSSA-2-200	200	0.89	2	50.8	Orange	12.58	5.71
IHSSA-2-300	300	1.335	2	50.8	Yellow	12.60	5.72
IHSSA-2-400	400	1.78	2	50.8	Green	12.78	5.8
IHSSA-2-500	500	2.225	2	50.8	White	14.82	6.73
IHSSA-2-600	600	2.669	2	50.8	Black	14.86	6.75
IHSSA-2-800	800	3.559	2	50.8	Red	14.92	6.77
IHSSA-2-1000	1000	4.449	2	50.8	Blue	14.95	6.79
IHSSA-2-1500	1500	6.673	2	50.8	Blue	14.95	6.79

Notes:

Housing and Threaded rod are made of high strength steel. IHSSA-2-100-1500 is designed and manufactured to provide minimum resistance of 1g for lateral seismic load.

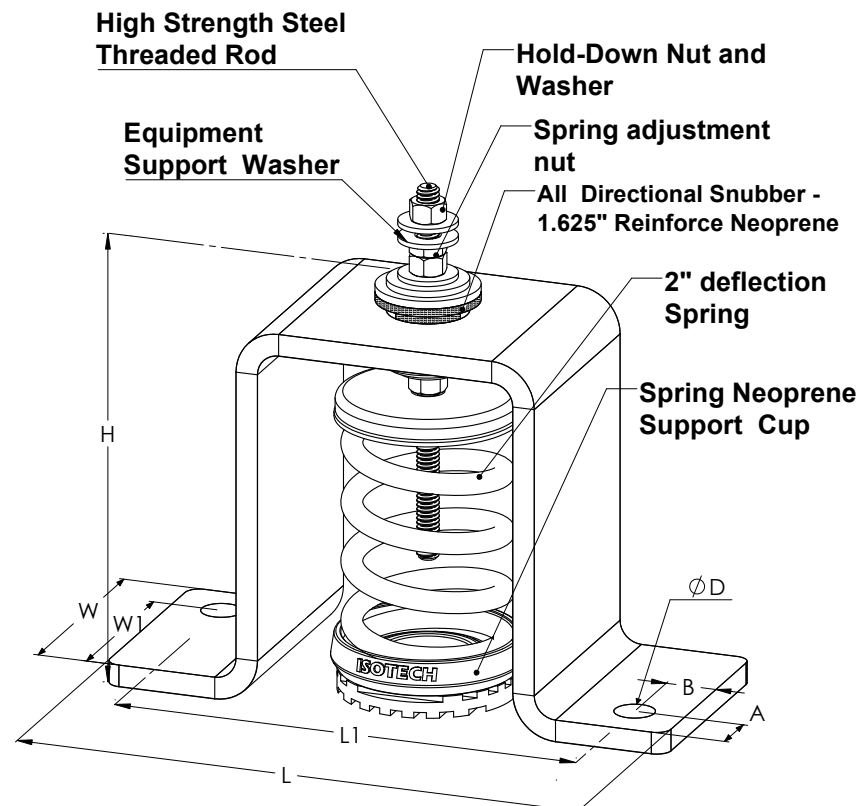
Hot-Dip Galvanized finish for Housing to offer maximum corrosion resistance for isolator - Hardware and Spring Compression Cup are zinc -electroplated

Spring(s) are powder - coated to provide maximum corrosion resistance, and are color-coded for easy identification at site - see table above

All springs have additional travel to solid equal to 50% of the Rated Deflection with minimum Kx/Ky ratio of 0.85 - All Elements are safe at solid load

All directional snubber is made of reinforced neoprene and is designed to prevent metal to metal contact. IHSSA-2-100-1000 must be installed so that snubbing elements have 1/8" to 1/4" clearance with housing under operating condition

Model					
IHSSA-2-100-1500					
L		W		H	
in	mm	in	mm	in	mm
9 7/8	251	4.0	102	7 3/4	197
L1		W1		ØD	
in	mm	in	mm	in	mm
8 1/8	207	2 1/4	58	11/16	18
A		B		Spring Adjustment Bolt	
in	mm	in	mm		
7/8	23	7/8	23	3/8" up to 500 lbs	5/8" 500 lbs & up

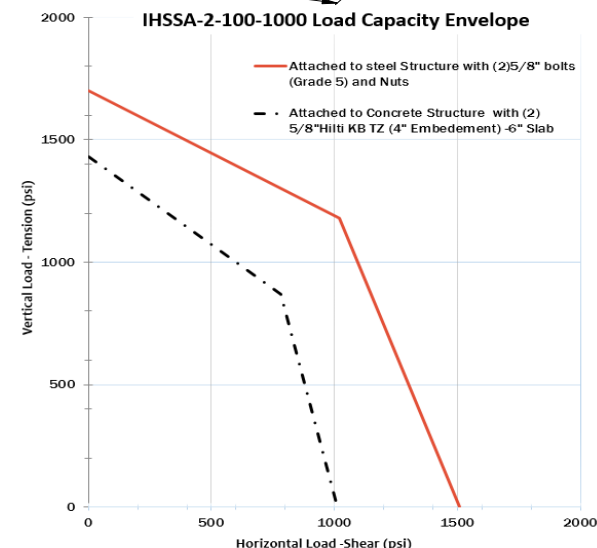


Isolators' Location

1:	4:
2:	5:
3:	6:

Plan view of installation -
Mounts under equipment

* Anchor capacity is based on 4000 psi reinforced concrete with minimum 6" edge distance. Hilti anchors- Type KBTZ - were considered for all calculations. Detailed calculations must be performed if different anchors are used.



Project Information:

Customer:	Type:
Consulting Engineer:	Model:
Acoustical Consultant:	Weight:
Project:	Location in Bldg.:
Drawing No.:	Qty Required
Note:	