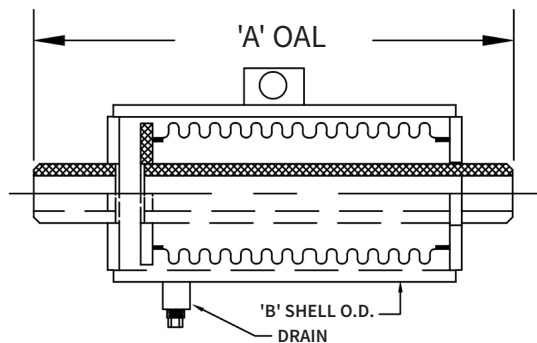


ISOTECH EXPANSION JOINT PRESSURIZED CARBON STEEL WITH WELD END 300 PSIG

QTY	ID # OR TAG #	DIA (IN)	PART # OR SKU	PRESSURE THRUST @ DESIGN PRES.	'A' OAL	'B' SHELL O.D.	SPRING RATE (LB/IN)
		1"	IEJP-CS300-W4-1	2400 LBF	23"	4 1/2"	60
		1 1/4"	IEJP-CS300-W4-1.25	2400 LBF	23 1/2"	4 1/2"	60
		1 1/2"	IEJP-CS300-W4-1.5	2400 LBF	23 1/2"	4 1/2"	60
		2"	IEJP-CS300-W4-2	2400 LBF	24"	4 1/2"	60
		2 1/2"	IEJP-CS300-W4-2.5	6100 LBF	26 7/8"	6 5/8"	230
		3"	IEJP-CS1300-W4-3	6100 LBF	26 7/8"	6 5/8"	230
		3 1/2"	IEJP-CS300-W4-3.5	6100 LBF	26 7/8"	6 5/8"	230
		4"	IEJP-CS300-W4-4	9000 LBF	26 1/4"	8 5/8"	230
		5"	IEJP-CS300-W4-5	20500 LBF	27 3/8"	10 3/4"	500
		6"	IEJP-CS300-W4-6	20500 LBF	27 3/8"	10 3/4"	500
		8"	IEJP-CS300-W4-8	24500 LBF	25 3/4"	12 3/4"	600
		10"	IEJP-CS300-W4-10	36700 LBF	25 3/4"	16"	850
		12"	IEJP-CS300-W4-12	50500 LBF	25 3/4"	18"	1250

IMPORTANT NOTE: EXPANSION COMPENSATOR'S ARE DESIGNED FOR A TOTAL OF 4" MOVEMENT; ACCOMMODATING 3-1/2" PIPE THERMAL EXPANSION AND 1/2" PIPE THERMAL CONTRACTION



RATED MAXIMUM COMPRESSION = 4"
DESIGN PRESSURE = 300 PSIG @ 650°F

NOTE: UNITS ARE DESIGNED TO
ACCOMMODATE 1/2" OVER COMPRESSION
& 1/2" OVER EXTENSION

MATERIALS OF CONSTRUCTION

BELLOW :	T-321 STAINLESS STEEL
PIPE :	CARBON STEEL SCH. STD.
PLATES :	CARBON STEEL

PROJECT INFORMATION

Customer:

Project:

Drawing No:

Notes:

Canada location

35 Siltan Road
Woodbridge ON
L4L 7Z8 CANADA
T: 905-856-5001

USA Location

7700 Irvine Centre Drive
Suite 800
Irvine, CA, 92618 U.S.A
T: 949-788-2930

www.isotechindustries.com

VISCMA
MEMBER