

1" Deflection Seismically Rated Floor Mounted Spring Isolator

File No. : ISOCS-IHSS-1-30-600

Date: 12/18/15

ISOIN-IHSS-1-30-600, Installation Instructions document, to be reviewed for installation

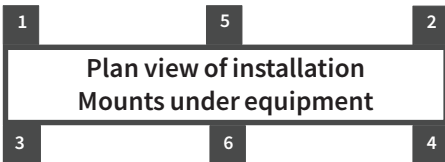
SPECIFICATIONS - 1" DEFLECTION SEISMICALLY RATED FLOOR MOUNTED SPRING ISOLATOR

Model	Rated Load		Rated Deflection		Spring Color		Approx. WT.	
	lbs.	KN	in	mm	outer	inner	lbs.	Kg
IHSS-1-30	30	0.134	1	25.4	YELLOW		4.57	2.08
IHSS-1-50	50	0.223	1	25.4	GREEN		4.58	2.08
IHSS-1-100	100	0.445	1	25.4	BLACK		4.60	2.09
IHSS-1-150	150	0.668	1	25.4	RED		4.78	2.17
IHSS-1-200	200	0.89	1	25.4	BLUE		4.82	2.19
IHSS-1-300	300	1.335	1	25.4	WHITE		4.86	2.21
IHSS-1-400	400	1.78	1	25.4	BROWN		4.92	2.24
IHSS-1-500	500	2.225	1	25.4	ORANGE		4.95	2.25
IHSS-1-600	600	2.669	1	25.4	GREY		5.10	2.32

Model					
IHSS-1-30-600					
L		W		H	
in	mm	in	mm	in	mm
8.0	204	3.0	77	5 15/16	151
L1		W1		Ø D	
in	mm	in	mm	in	mm
6 1/2	166	1 1/2	39	5/16	15
A		B		SPRING BOLT ADJUSTMENT	
in	mm	in	mm	5/8"	
3/4	20	3/4	20		

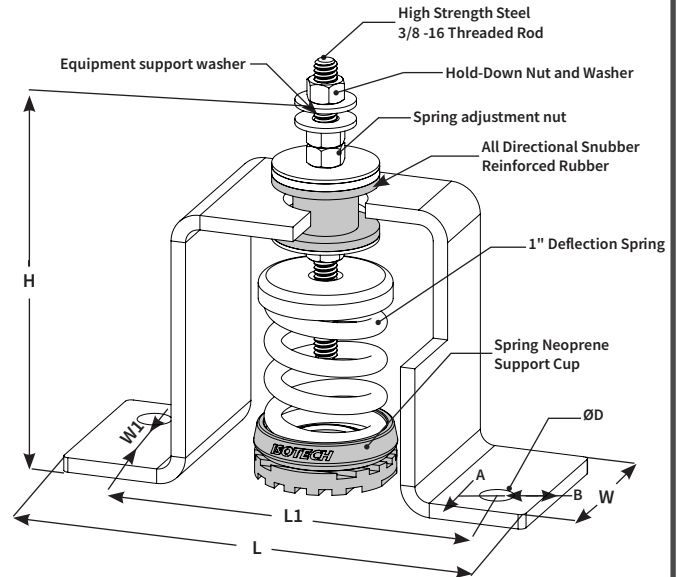
ISOLATOR LOCATIONS

1:	4:
2:	5:
3:	6:

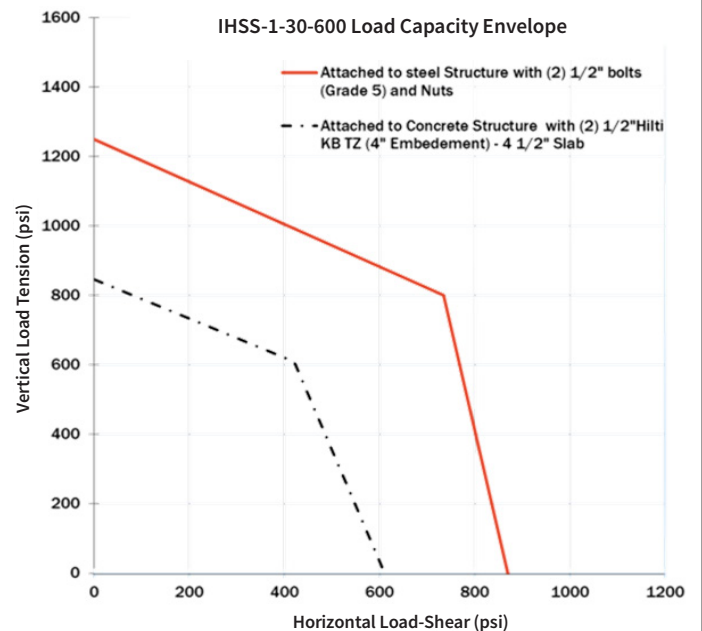


Notes:

- Housing and Threaded rod are made of high strength steel. IHSS-1-30-600 is designed and manufactured to provide minimum resistance of 1g for lateral seismic load.
- Hot-Dip Galvanized finish for Housing to offer maximum corrosion resistance for isolator - Hardware and Spring Compression Cup are zinc-electroplated
- Spring(s) are powder-coated to provide maximum corrosion resistance, and are color-coded for easy identification at site - see table above
- All springs have additional travel to solid equal to 50% of the Rated Deflection with minimum Kx/Ky ratio of 0.85 - All Elements are safe at solid load
- All directional snubber is made of reinforced neoprene and is designed to prevent metal to metal contact. IHSS-1-30-600 must be installed so that snubbing elements have 1/8" to 1/4" clearance with housing under operating condition



* Anchor capacity is based on 4000 psi reinforce concrete(cracked concrete) with minimum 6" edge distance. Hilti anchors- Type KBTZ - were considered for all calculations. Detailed calculations must be performed if different anchors are used.



PROJECT INFORMATION		EQUIPMENT INFORMATION		<div>Canada location</div> <div>35 Siltan Road Woodbridge ON L4L 7Z8 CANADA T: 905-856-5001 www.isotechindustries.com</div> <div>USA Location</div> <div>7700 Irvine Centre Drive Suite 800 Irvine, CA, 92618 U.S.A T: 949-788-2930</div>	<div>VISCOMA</div> <div>MEMBER</div>
Customer:		Type:			
Project:		Qty Required:			
Drawing No:		Operating Weight:			
Notes:					