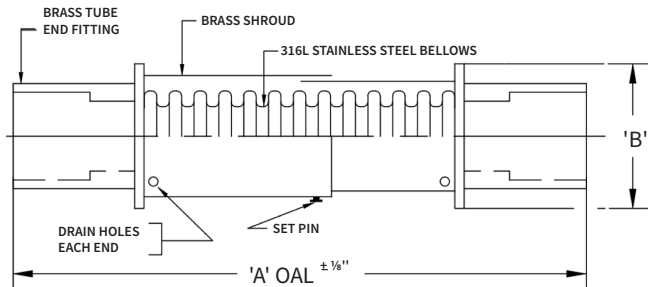


ISOTECH EXPANSION JOINT COPPER PIPE WITH FEMALE SWEAT END 200 PSIG

QTY	ID # OR TAG #	DIA (IN)	PART # OR SKU	'A' OAL	'B' WIDTH (SQ.)	RATED STROKE		WEIGHT (LBS)
						COMP. (IN)	EXT. (IN)	
		1"	IEJ-CP200-SW2-1	6 1/2"	2"	1 1/2"	1/2"	1 1/2
		1 1/4"	IEJ-CP200-SW2-1.25	6 1/2"	2"	1 1/2"	1/2"	1 3/4
		1 1/2"	IEJ-CP200-SW2-1.5	6 1/2"	2 1/2"	1 1/2"	1/2"	2 3/4
		2"	IEJ-CP200-SW2-2	10"	3"	1 1/2"	1/2"	3 1/2
		2 1/2"	IEJ-CP200-SW2-2.5	10 3/4"	3 1/2"	1 1/2"	1/2"	5
		3"	IEJ-CP200-SW2-3	11 1/2"	4 1/2"	1 1/2"	1/2"	6 1/4
		4"	IEJ-CP200-SW2-4	13 1/2"	5 1/2"	1 1/2"	1/2"	7

IMPORTANT NOTE: EXPANSION COMPENSATOR'S ARE DESIGNED FOR A TOTAL OF 2" MOVEMENT; ACCOMMODATING 1-1/2" PIPE THERMAL EXPANSION AND 1/2" PIPE THERMAL CONTRACTION

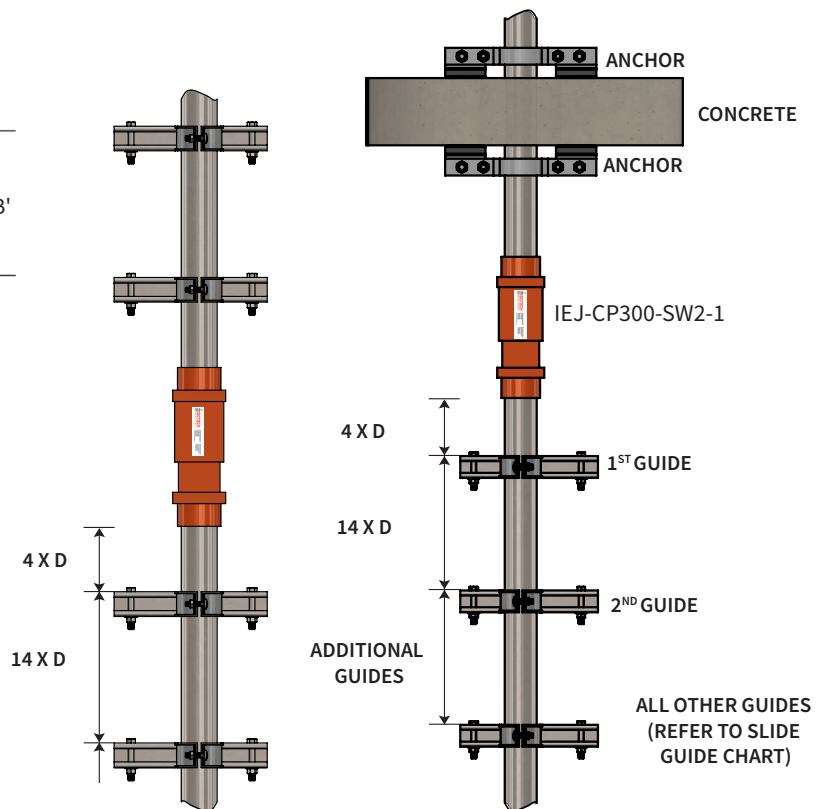


NOTE: END FITTINGS MAY BE 2 PIECE DESIGN USING COPPER

DESIGN PRESSURE @ 70°F = 200 PSIG

MATERIALS OF CONSTRUCTION

SHROUD :	BRASS
BELLOWS :	316L STAINLESS STEEL
END FITTINGS :	BRASS



PROJECT INFORMATION

Customer:

Project:

Drawing No:

Notes:

Canada location

35 Siltan Road
Woodbridge ON
L4L 7Z8 CANADA
T: 905-856-5001
www.isotechindustries.com

USA Location

7700 Irvine Centre Drive
Suite 800
Irvine, CA, 92618 U.S.A
T: 949-788-2930

VISCMA
MEMBER