



ICSN-ISOTECH COOLING TOWER/CHILLER NON-SEISMIC

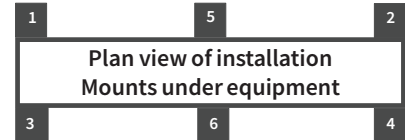
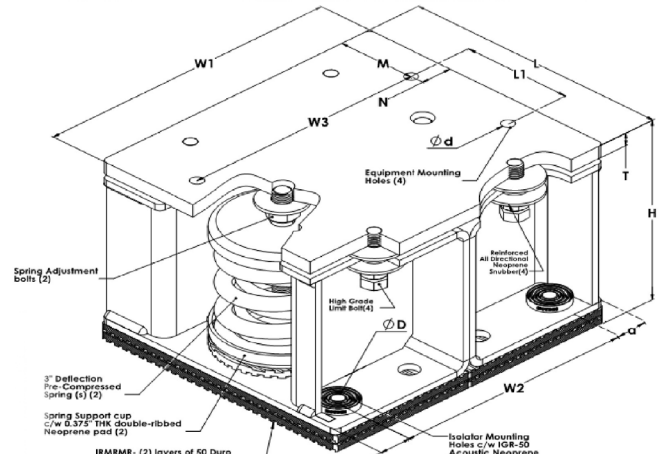
File No.: ISOCS-ICSN-3R2-3000-9000

Date: 12/27/15

ISOIN-ICSN-CSN-3R2-3000-9000, Installation instructions document, to be reviewed for installation

SPECIFICATIONS - 3" DEFLECTION RESTRAINED SPRING AND NEOPRENE PADS

Model	Rated Load		Rated Deflection		Spring Color		Approx. WT.	
	lb.	KN	in	mm	outer	inner	lb.	Kg
ICSN-3R2-3000	3000	13.345	3.0	76.2	BLACK	---	98.60	44.73
ICSN-3R2-3600	3600	16.014	3.0	76.2	ORANGE	GREY	99.00	44.91
ICSN-3R2-4000	4000	17.793	3.0	76.2	RED	---	98.00	44.46
ICSN-3R2-4600	4600	20.462	3.0	76.2	BLACK	GREY	99.20	45
ICSN-3R2-5000	5000	22.241	3.0	76.2	GREY	---	99.00	44.91
ICSN-3R2-5600	5600	24.91	3.0	76.2	BLACK	GREY	100.60	45.64
ICSN-3R2-6000	6000	26.69	3.0	76.2	BROWN	---	100.00	45.36
ICSN-3R2-7000	7000	31.138	3.0	76.2	BROWN	YELLOW	101.40	46
ICSN-3R2-7600	7600	33.807	3.0	76.2	BROWN	GREY	101.80	46.18
ICSN-3R2-8000	8000	35.586	3.0	76.2	BROWN	BROWN	102.24	46.38
ICSN-3R2-8400	8400	37.365	3.0	76.2	BROWN	ORANGE	103.40	46.91
ICSN-3R2-9000	9000	40.034	3.0	76.2	BROWN	RED	105.00	47.68



Model												
ICSN-3R2-3000-9000												
L		W1		H		T		W2		ø D		
in	mm	in	mm	in	mm	in	mm	in	mm	in	mm	
11 1/2	293	###	###	335	9	229	5/8	16	10 7/16	265	1/2	13
ø d		M		N		a		SPRING ADJUSTMENT BOLTS				
in	mm	in	mm	in	mm	in	mm					
1/2	13	3 3/8	86	1 5/16	34	1 7/16	36	3/4"				

ISOLATOR'S LOCATIONS	
1:	4:
2:	5:
3:	6:

Notes:

- ICSN-3R2-3000-9000 isolators are all Pre-Compressed to allow the lowest overall installation height and to offer significant labor saving during installation
- All springs have additional travel to solid equal to 50% of the Rated Deflection with minimum Kx/Ky ratio of 1.0 - All Elements are safe at solid load
- Spring(s) are powder - coated to provide maximum corrosion resistance , and are color-coded for easy identification at site - see table above
- Hot-Dip Galvanized finish for Housing to offer maximum corrosion resistance for isolator - Hardware and Spring Compression Cup are zinc -electroplated
- ICSN-3R2-3000-9000 isolators are designed to allow replacement of Neoprene grommet without disturbing equipment. Neoprene grommet are installed to prevent metal to metal contact

* Load Capacity Envelope: Concrete loads are based on 4000 psi reinforced concrete with minimum 6" edge distance and can be considered for nonseismic applications only.

PROJECT INFORMATION		EQUIPMENT INFORMATION		Canada location		USA Location		
Customer:		Type:		35 Silton Road	7700 Irvine Centre Drive	Suite 800		
Project:		Qty Required:		L4L 7Z8 CANADA	Irvine, CA, 92618 U.S.A			
Drawing No:		Operating Weight:		T: 905-856-5001	T: 949-788-2930			
Notes:								www.isotechindustries.com