

Attachment to Concrete Structure Installation Instructions ICSA-2-5000-9000

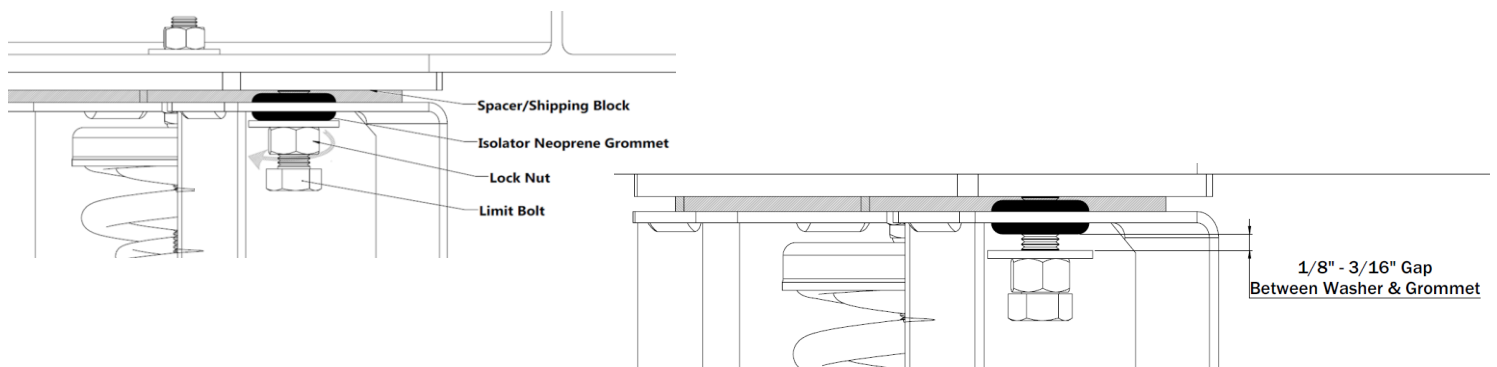
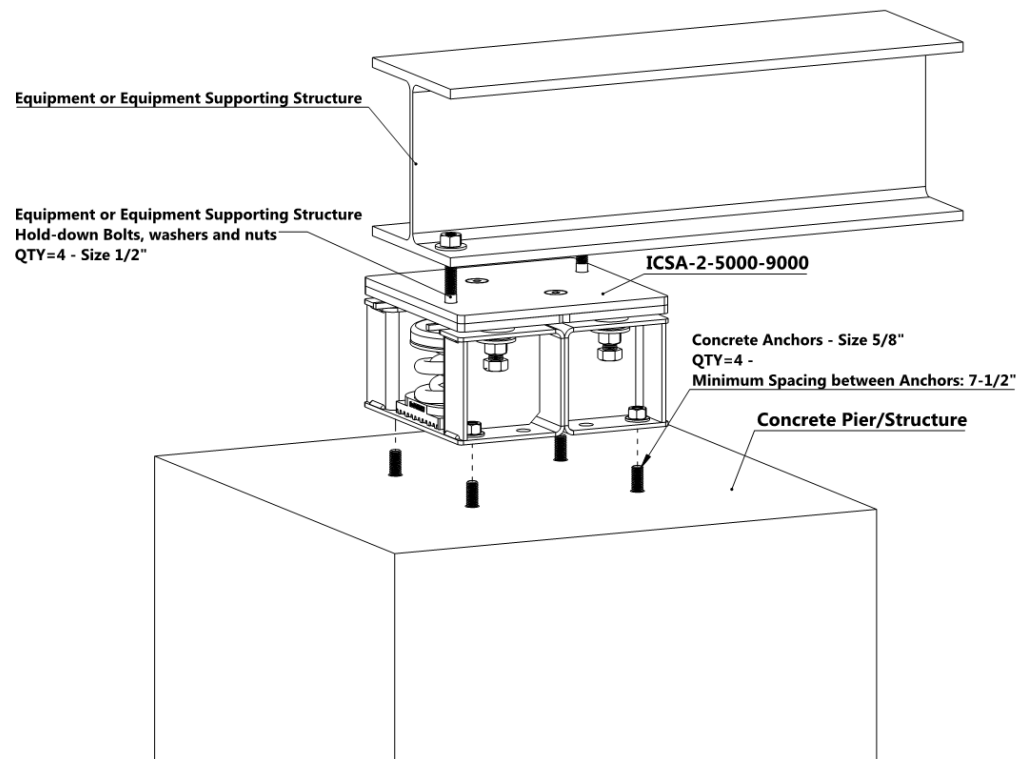
File No. ISOIN-ICSA-2-5000-9000 Concrete

Date: 22/12/2015

Non-Seismic Applications

ICSA-2-5000-9000 Restraint/Isolators are Pre-Compressed products. Isolator Top plate is under pressure caused by compressed springs. The following steps must be followed carefully for proper installation:

1. **Do not remove** Spacers/Shipping Blocks from isolators until **step #9** as they are the key indicators for proper adjustment on springs
2. Refer to submittal package prepared by ISOTECH Industries and locate each isolator based on model# and identification tag provided
3. Secure Isolators to the supporting concrete structure using (4) four sets of 5/8" concrete anchors.
 - a. Seismically rated anchor would be a preferred choice for installation
4. Mark isolator anchor holes on concrete structure and follow anchor manufacturer's instructions on hole preparation, hole cleaning procedures, anchor installations and required torque value on anchor nuts- secure each isolator to concrete structure
5. Use crane, gantry or other proper lifting machine to elevate equipment and/or equipment supporting structure
6. Carefully lower the equipment and/or equipment supporting structure and properly locate it on top of isolators. Use (2) four sets of 1/2" dia. bolts, nuts and washers to secure the equipment and/or equipment supporting structure to each isolator
7. Loosen the two **Lock Nuts** located inside each stanchion as shown in the picture and move it down to have 1/8" gap between washer and bottom of **Reinforced Rubber Washer**

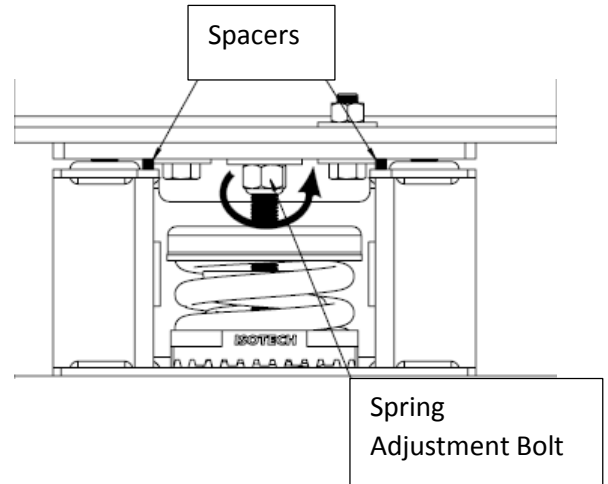
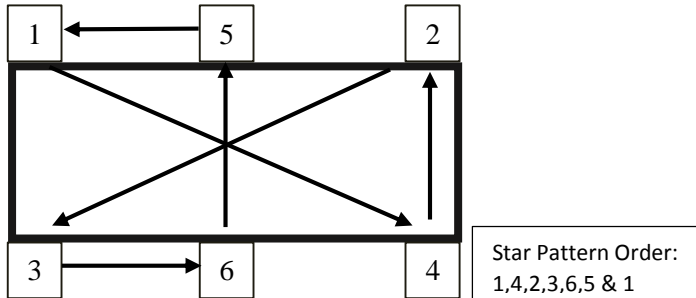


Attachment to Concrete Structure Installation Instructions ICESA-2-5000-9000

File No. ISOIN-ICSA-2-5000-9000 Concrete

Date: 22/12/2015

8. With Spacers/ Shipping Blocks in place, follow star pattern sequence shown below and turn **Spring Adjustment Bolt** one or two turns on each isolator. DO NOT turn **Spring Adjustment Bolt** more than two turns at a time, turn both spring adjustment bolts on each isolator



9. Follow Star Pattern Sequence until **Spacers/ Shipping Blocks** can be moved easily

